

APP CRS	Rwy Idg	3300
059°	TDZE	688
	Apt Elev	688

RNAV (GPS) RWY 6

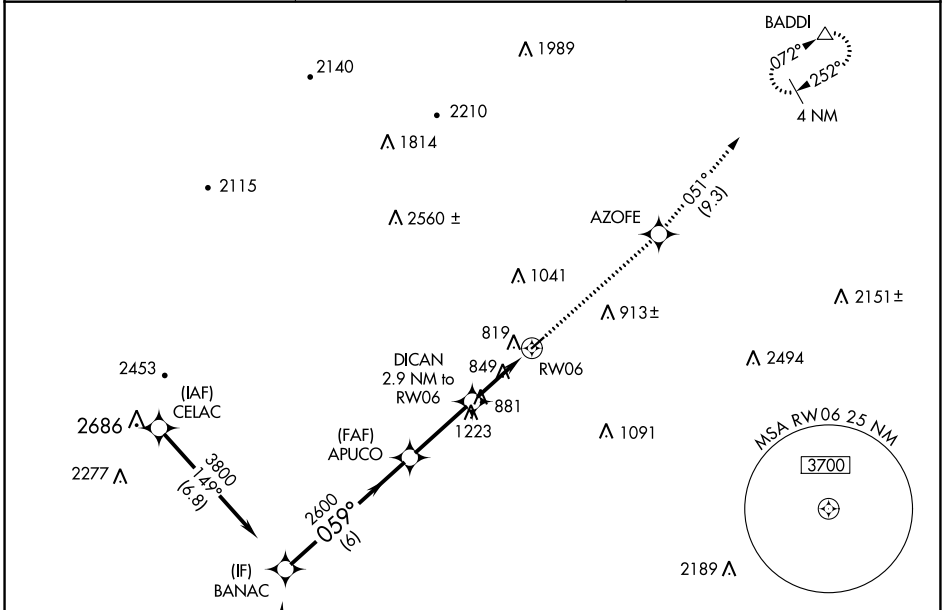
FRANKLIN COUNTY RGNL (N68)

RNP APCH - GPS.

▼ Circling to Rwy 24 NA at night. VDP NA when using Hagerstown, MD altimeter setting.
 ▲ NA When local altimeter setting not received, use Hagerstown, MD altimeter setting and increase all MDAs 40 feet, increase LNAV Cat C visibility ¼ SM.

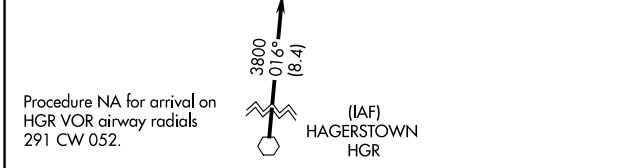
MISSED APPROACH: Climb to 4000 direct AZOFE and on track 051° to BADDI and hold, continue climb-in-hold to 4000.

AWOS-3 120.725	HARRISBURG APP CON 124.1 273.525	CTAF 122.9
--------------------------	--	----------------------

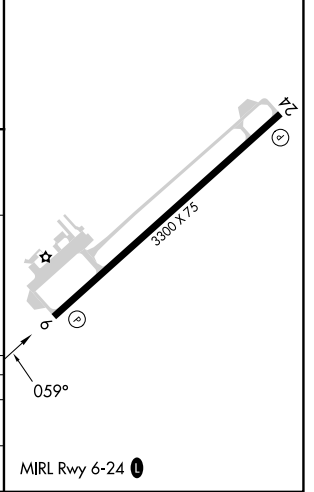
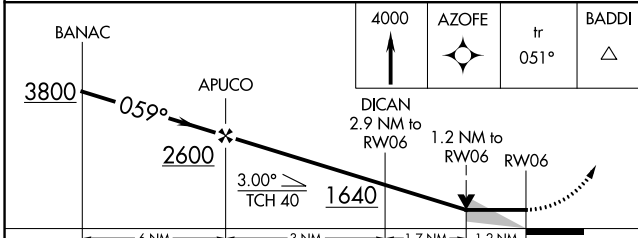


NE-4, 11 JUL 2024 to 08 AUG 2024

NE-4, 11 JUL 2024 to 08 AUG 2024



ELEV 688	TDZE 688
----------	----------



CATEGORY	A	B	C	D
LNAV MDA	1100-1	412 (500-1)	1100-1½ 412 (500-1½)	NA
CIRCLING	1220-1	532 (600-1)	1360-2 672 (700-2)	NA