

(BLTWY7.BLTWY) 21280

AL-6460 (FAA)

PEARLAND RGNL (LVJ)
HOUSTON, TEXAS

BLTWY SEVEN DEPARTURE (RNAV)

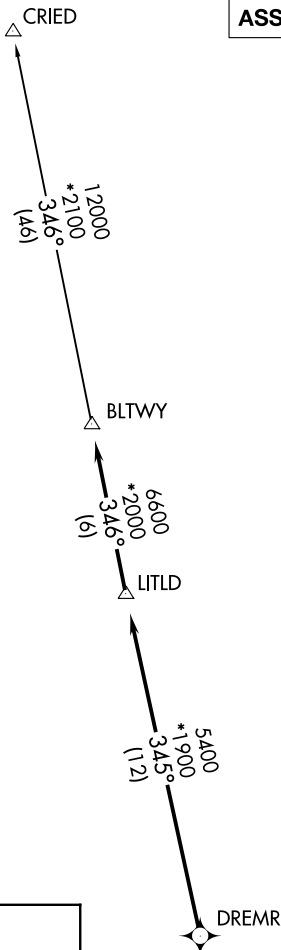
ASOS
118.525
CLNC DEL
124.0
CTAF
122.725
HOUSTON DEP CON
134.45 284.0

**TOP ALTITUDE:
ASSIGNED BY ATC**

NOTE: RADAR required.
NOTE: DME/DME/IRU or GPS required.
NOTE: RNAV 1.

TAKEOFF MINIMUMS

Rwys 14, 32: Standard with minimum climb of 500' per NM to 560.



DEPARTURE ROUTE DESCRIPTION

TAKEOFF RUNWAY 14: Climb on heading 142° to 1600 for RADAR vectors to DREMR, thence

TAKEOFF RUNWAY 32: Climb on heading 322° to 700 for RADAR vectors to DREMR, thence

...on track 345° to LITLD, then on track 346° to BLTWY, then on (transition). Maintain ATC assigned altitude. Expect filed altitude 10 minutes after departure.

CRIED TRANSITION (BLTWY7.CRIED)

SC-5, 11 JUL 2024 to 08 AUG 2024

SC-5, 11 JUL 2024 to 08 AUG 2024

BLTWY SEVEN DEPARTURE (RNAV)
(BLTWY7.BLTWY) 07OCT21

HOUSTON, TEXAS
PEARLAND RGNL (LVJ)