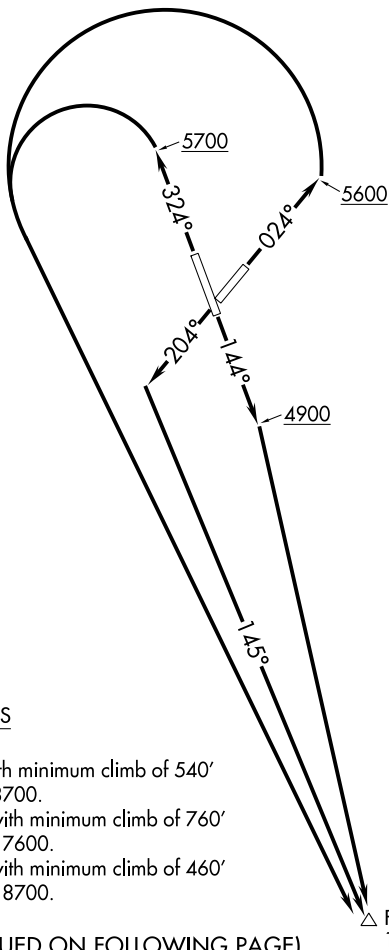


# FESKO ONE DEPARTURE (OBSTACLE) (RNAV)

WINNEMUCCA MUNI (WMC)  
WINNEMUCCA, NEVADA

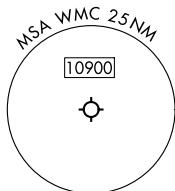
RNAV 1 - GPS

SALT LAKE CITY CENTER  
132.25 338.35  
ASOS  
120.175  
CTAF  
122.8



### TAKEOFF MINIMUMS

- Rwy 14: Standard.
- Rwy 2: Standard with minimum climb of 540' per NM to 8700.
- Rwy 20: Standard with minimum climb of 760' per NM to 7600.
- Rwy 32: Standard with minimum climb of 460' per NM to 8700.



(NOTES CONTINUED ON FOLLOWING PAGE)

NOTE: Chart not to scale.

### DEPARTURE ROUTE DESCRIPTION

TAKEOFF RUNWAY 2: Climb on heading 024° to 5600, then left turn direct FESKO, thence. . . .

TAKEOFF RUNWAY 14: Climb on heading 144° to 4900, then direct FESKO, thence. . . .

TAKEOFF RUNWAY 20: Climb on heading 204° to intercept course 145° to FESKO, thence. . . .

TAKEOFF RUNWAY 32: Climb on heading 324° to 5700, then left turn direct FESKO, thence. . . .

. . . .cross FESKO at or above 11000 before proceeding on assigned route of flight.

# FESKO ONE DEPARTURE (OBSTACLE) (RNAV)

SW-4, 11 JUL 2024 to 08 AUG 2024

SW-4, 11 JUL 2024 to 08 AUG 2024