

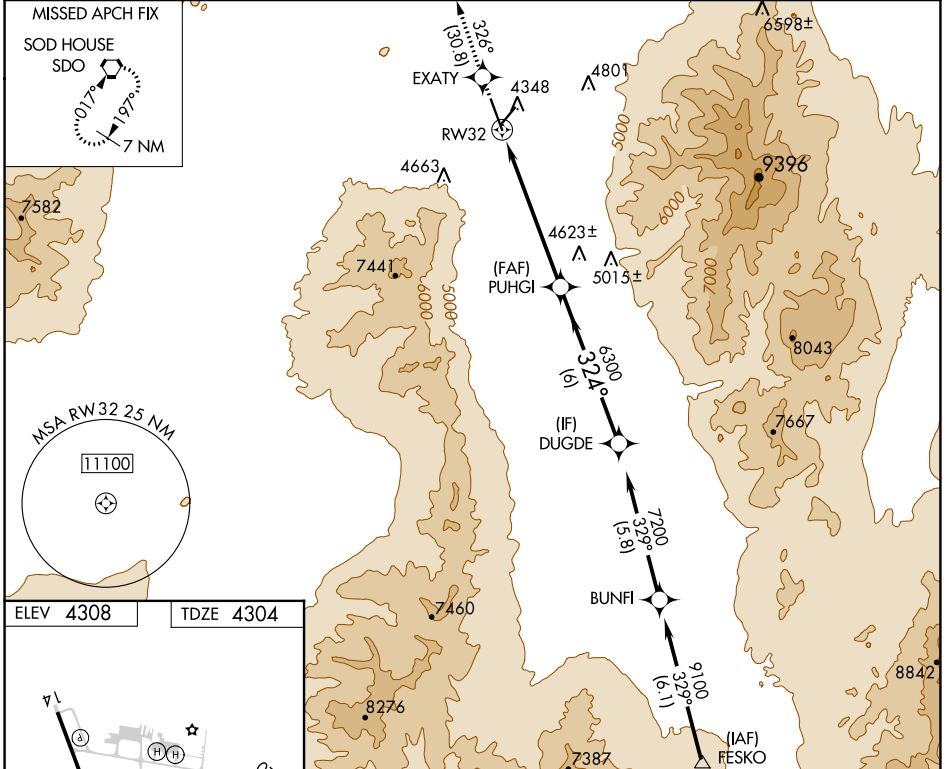
WAAS CH 72702 W32A	APP CRS 324°	Rwy Idg TDZE Apt Elev	7000 4304 4308
--	------------------------	-----------------------------	---

RNAV (GPS) RWY 32

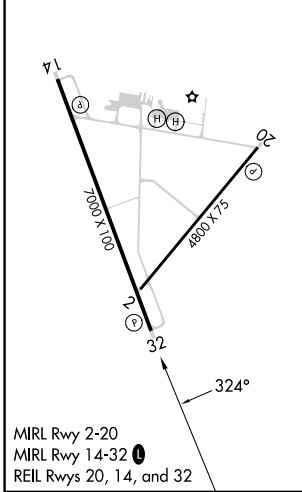
WINNEMUCCA MUNI (WMC)

RNP APCH. Rwy 32 helicopter visibility reduction below 3/4 SM NA. VDP NA when using Battle Mountain altimeter setting. When local altimeter setting not received, use Battle Mountain altimeter setting and increase all DAs/MDAs 140 feet.	MISSED APPROACH: Climb to 10000 direct EXATY and on track 326° to SDO VORTAC and hold.
--	--

ASOS 120.175	SALT LAKE CITY CENTER 132.25 338.35	UNICOM 122.8 (CTAF)
------------------------	---	-------------------------------



ELEV 4308	TDZE 4304
-----------	-----------



10000	EXATY	tr 326°	SDO	VGSI And RNAV glidepath not coincident (VGSI Angle 3.00/TCH 40).
				DUGDE
*LNAV only	*1.7 NM to RW32			7200
				GP 3.00° TCH 45
CATEGORY	A	B	C	D
LPV DA	4554-3/4 250 (300-3/4)			
LNAV MDA	4880-1	576 (600-1)	4880-1 1/2 576 (600-1 1/2)	4880-1 3/4 576 (600-1 3/4)

SW-4, 11 JUL 2024 to 08 AUG 2024

SW-4, 11 JUL 2024 to 08 AUG 2024