

APP CRS	Rwy Idg	N/A
005°	TDZE	N/A
	Apt Elev	1694

# RNAV (GPS)-B

JAMESTOWN MUNI (2A1)

RNP APCH - GPS.

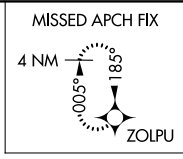
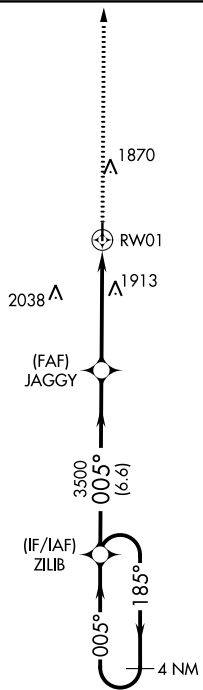
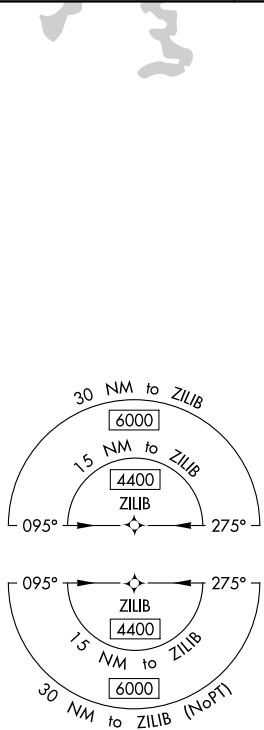
**NA** Obtain local altimeter setting on CTAF, when not received, use Crossville altimeter setting and increase all MDA 100 feet and Cat C visibility 1/2 SM. Rwy 19 helicopter visibility reduction below 1 SM NA. Circling to Rwy 19 NA at night.

**MISSED APPROACH:**  
Climb to 4000 direct ZOLPU and hold.

CSV ASOS  
**120.625**

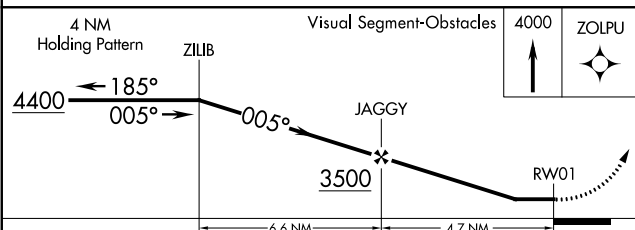
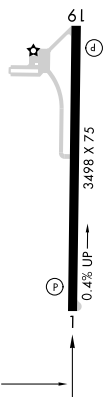
INDIANAPOLIS CENTER  
**124.625 371.925**

UNICOM  
**122.8 (CTAF)**



2575<sup>Λ</sup>

ELEV	1694
MIRL Rwy 1-19	①
REIL Rwy 1 and 19	②



CATEGORY	A	B	C	D
CIRCLING	2180-1 486 (500-1)	2260-1 566 (600-1)	2340-1 3/4 646 (700-1 3/4)	NA

SE-1, 11 JUL 2024 to 08 AUG 2024

SE-1, 11 JUL 2024 to 08 AUG 2024