

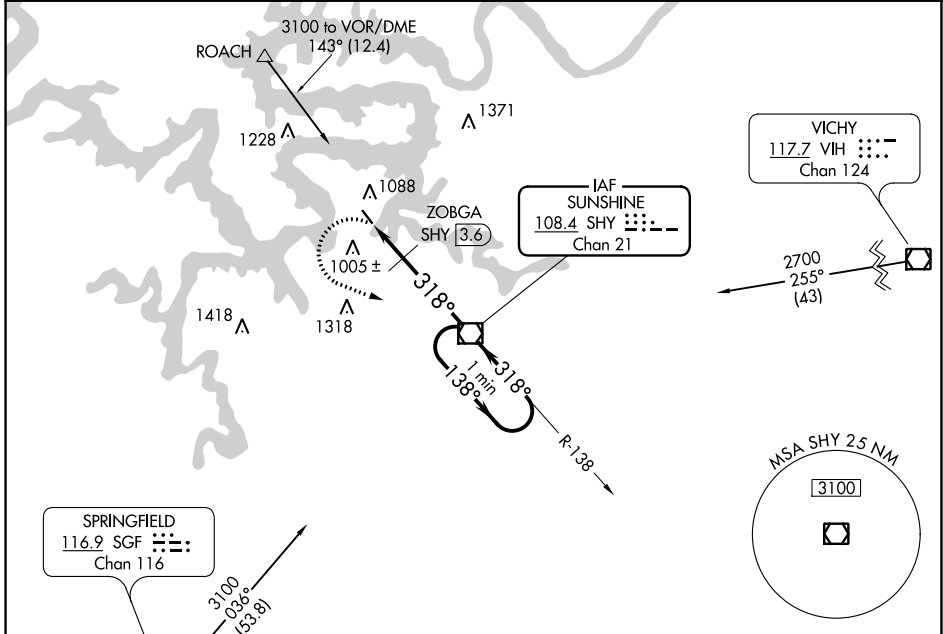
VOR/DME SHY 108.4 Chan 21	APP CRS 318°	Rwy Idg 3205 TDZE 875 Apt Elev 876
--	------------------------	---

VOR RWY 32
GRAND GLAIZE-OSAGE BEACH (K15)

▼ Helicopter visibility reduction below 1 SM NA. Procedure NA at night.
▲ NA Use Kaiser Lake Ozark altimeter setting; when not received, use Camdenton altimeter setting and increase all MDA 40 feet.

MISSED APPROACH: Climbing left turn to 2700 direct SHY VOR/DME and hold.

MIZZU APP CON 124.1 353.925	UNICOM 122.8 (CTAF) 0
---------------------------------------	---------------------------------



NC-3, 11 JUL 2024 to 08 AUG 2024

NC-3, 11 JUL 2024 to 08 AUG 2024

