

# SWABR ONE DEPARTURE (RNAV)

SC-2, 11 JUL 2024 to 08 AUG 2024

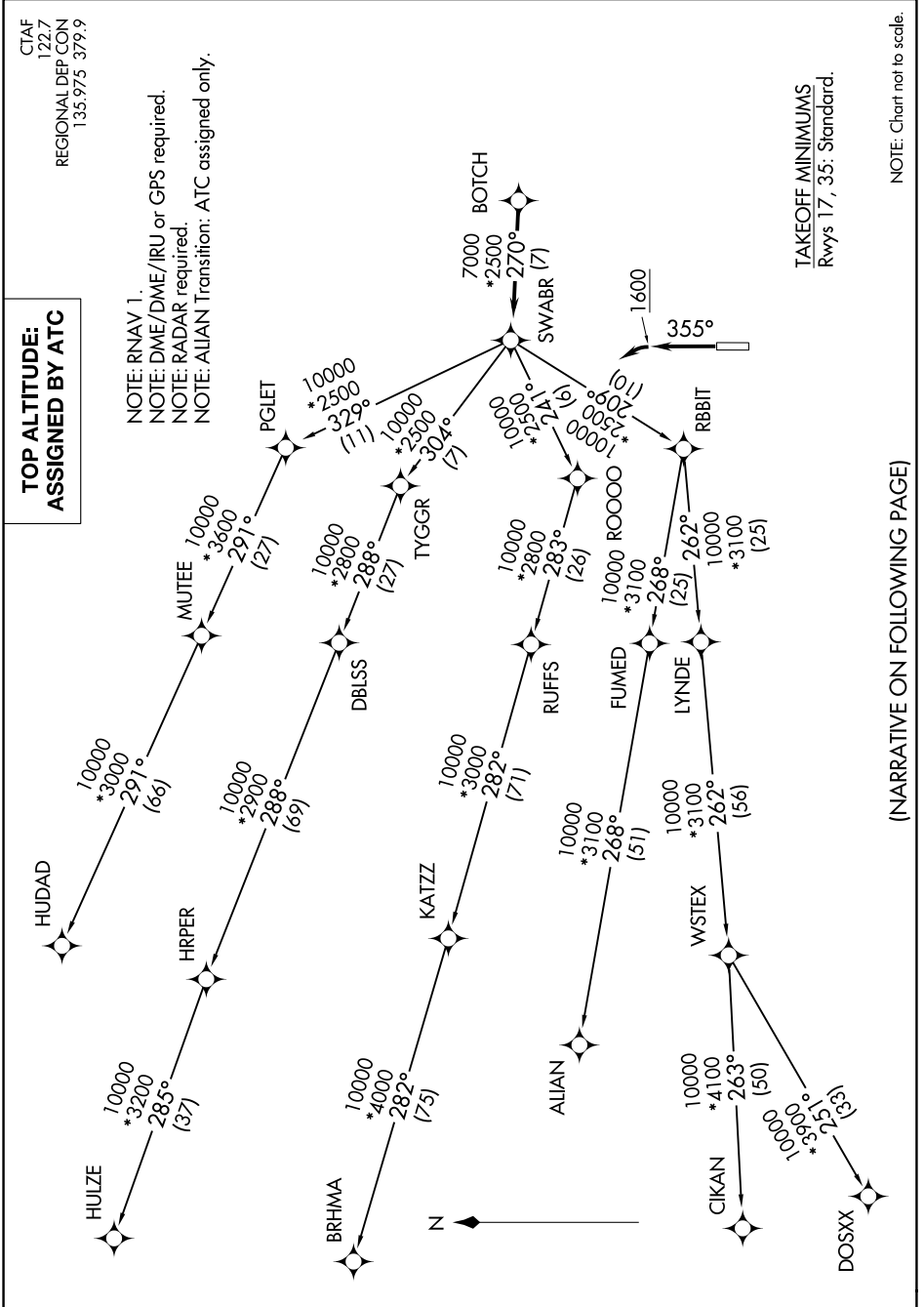
CTAF  
122.7  
REGIONAL DEP CON  
135.975 379.9

## TOP ALTITUDE: ASSIGNED BY ATC

NOTE: RNAV 1.  
NOTE: DME/DME/IRU or GPS required.  
NOTE: RADAR required.  
NOTE: ALIEN Transition: ATC assigned only.

TAKEOFF MINIMUMS  
Rwy 17, 35: Standard.

NOTE: Chart not to scale.



# SWABR ONE DEPARTURE (RNAV)

(NARRATIVE ON FOLLOWING PAGE)

SC-2, 11 JUL 2024 to 08 AUG 2024