

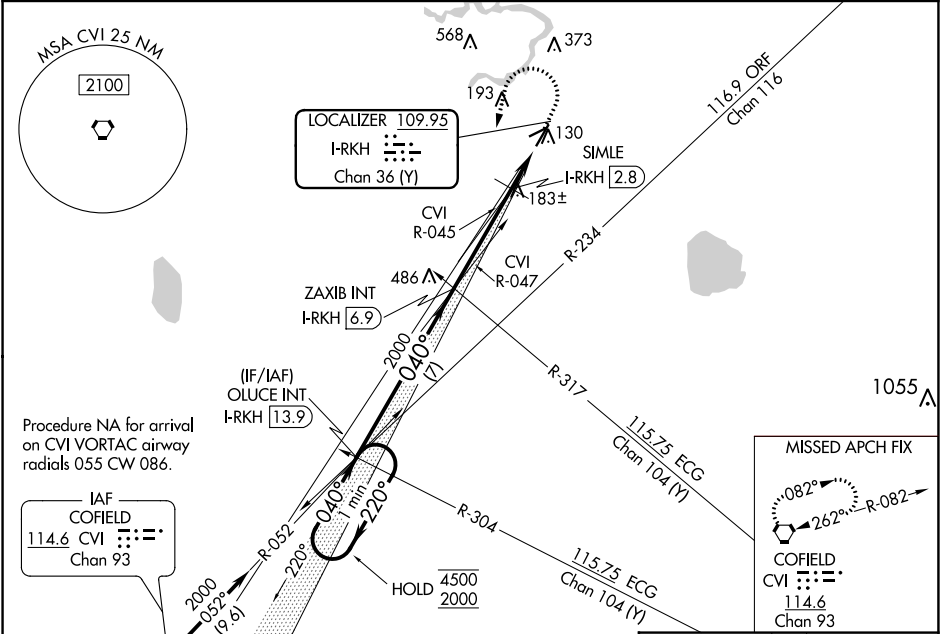
LOC/DME I-RKH	APP CRS	Rwy Idg	<b>5007</b>
<b>109.95</b>	<b>040°</b>	TDZE	<b>66</b>
Chan 36(Y)		Apt Elev	<b>70</b>

**LOC RWY 4**  
SUFFOLK EXEC (SF'Q)

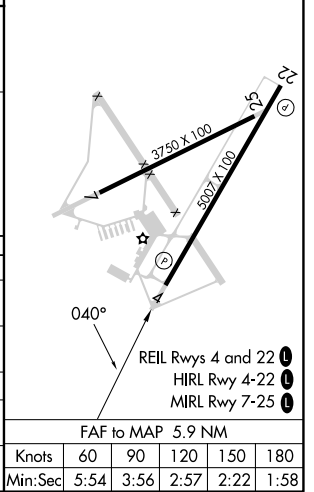
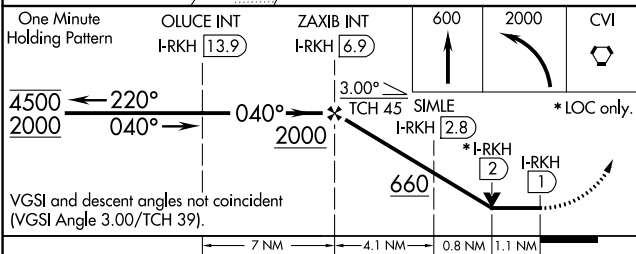
**NA**

MISSED APPROACH: Climb to 600 then climbing left turn to 2000 direct CVI VORTAC and hold.

AWOS-3 <b>119.375</b>	NORFOLK APP CON <b>127.9 269.425</b>	UNICOM <b>122.7 (CTAF)</b>
--------------------------	---	-------------------------------



ELEV 70	TDZE 66
---------	---------



CATEGORY	A	B	C	D
S-4	660-1	594 (600-1)	660-1¾	594 (600-1¾)
<b>C</b> CIRCLING	660-1	590 (600-1)	680-1¾ 610 (700-1¾)	680-2 610 (700-2)
SIMLE FIX MINIMUMS (DME REQUIRED)				
S-4	440-1 374 (400-1)			
<b>C</b> CIRCLING	500-1 430 (500-1)	560-1 490 (500-1)	680-1¾ 610 (700-1¾)	680-2 610 (700-2)

NE-3, 11 JUL 2024 to 08 AUG 2024

NE-3, 11 JUL 2024 to 08 AUG 2024