

APP CRS	Rwy Idg	3750
254°	TDZE	69
	Apt Elev	70

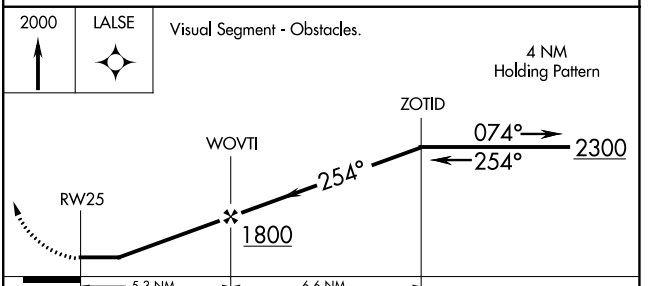
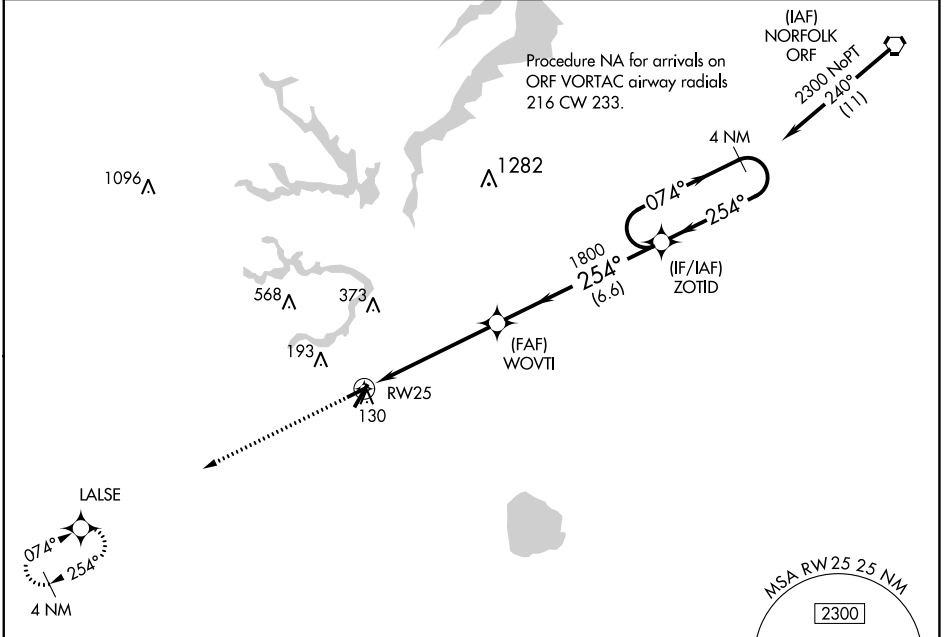
RNAV (GPS) RWY 25

SUFFOLK EXEC (SFQ)

⚠ DME/DME RNP-0.3 NA. Helicopter visibility reduction below 1 SM NA.
⚠ When local altimeter setting not received, use Norfolk Intl altimeter setting and increase all MDA 60 feet.

MISSED APPROACH: Climb to 2000 direct LALSE and hold.

AWOS-3 119.375	NORFOLK APP CON 127.9 269.425	UNICOM 122.7 (CTAF)
--------------------------	---	-------------------------------



CATEGORY	A	B	C	D
LNAV MDA	480-1	411 (500-1)	NA	
C CIRCLING	500-1 430 (500-1)	560-1 490 (500-1)	NA	

REIL Rwy 4 and 22 **Ⓛ**
 HIRL Rwy 4-22 **Ⓛ**
 MIRL Rwy 7-25 **Ⓛ**

NE-3, 11 JUL 2024 to 08 AUG 2024

NE-3, 11 JUL 2024 to 08 AUG 2024