

WAAS CH 65937 W21A	APP CRS 212°	Rwy Idg TDZE Apt Elev	5500 164 164
--	------------------------	-----------------------------	---

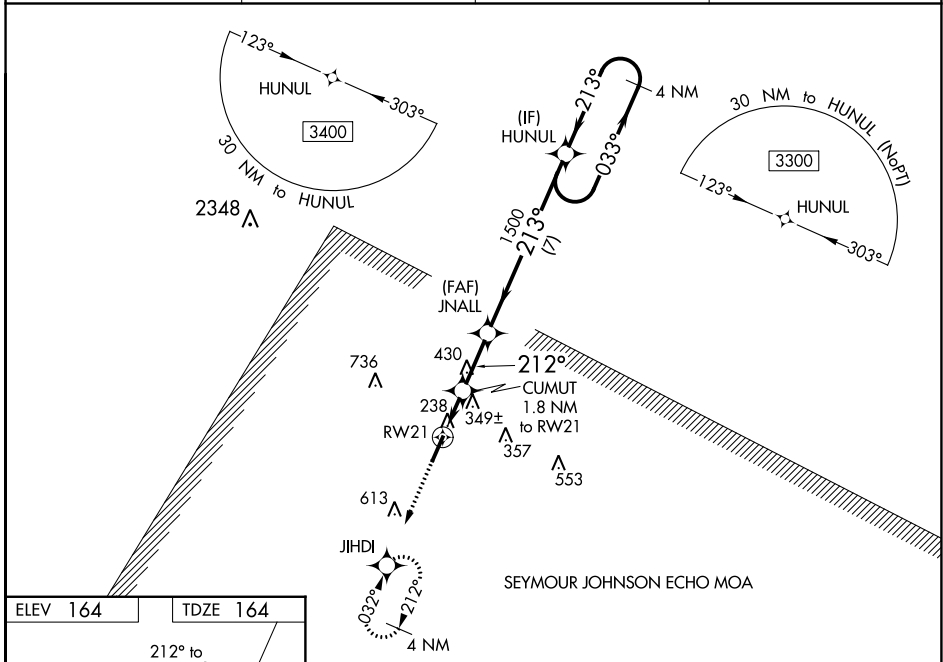
RNAV (GPS) RWY 21

JOHNSTON RGNL (JNX)

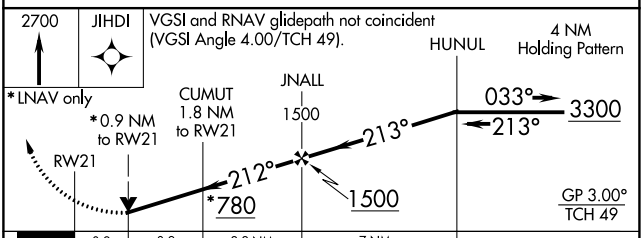
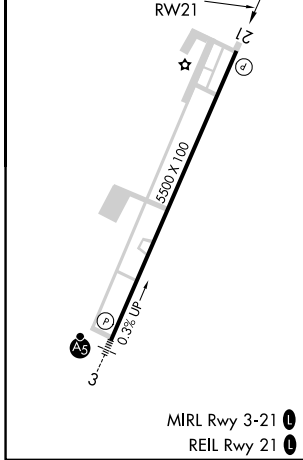
⚠ For uncompensated Baro-VNAV systems, LNAV/VNAV NA below -15°C (5°F) or above 54°C (130°F). DME/DME RNP-0.3 NA. When local altimeter setting not received, use Erwin altimeter setting and increase all DA 50 feet and all MDA 60 feet; increase LPV all Cats and Circling Cat C visibility ¼ mile; increase LNAV/VNAV all Cats and LNAV Cats C/D visibility ⅓ mile. Baro-VNAV and VDP NA with Erwin altimeter setting. Helicopter visibility reduction below ¾ SM NA.

MISSED APPROACH: Climb to 2700 direct JIHDI and hold, continue climb-in-hold to 2700.

AWOS-3 120.225	RALEIGH APP CON 125.3 353.675	GCO 135.075	UNICOM 122.725 (CTAF) ①
---------------------------------	--	------------------------------	--



ELEV 164	TDZE 164
-----------------	-----------------



CATEGORY	A	B	C	D
LPV DA		518-1⅛	354 (400-1⅛)	
LNAV/VNAV DA		666-1¾	502 (600-1¾)	
LNAV MDA	600-1	436 (500-1)	600-1¼	436 (500-1¼)
C CIRCLING	660-1	496 (500-1)	920-2¼ 756 (800-2¼)	1100-3 936 (1000-3)

SE-2, 11 JUL 2024 to 08 AUG 2024

SE-2, 11 JUL 2024 to 08 AUG 2024