

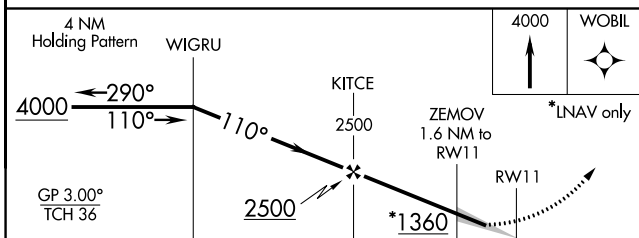
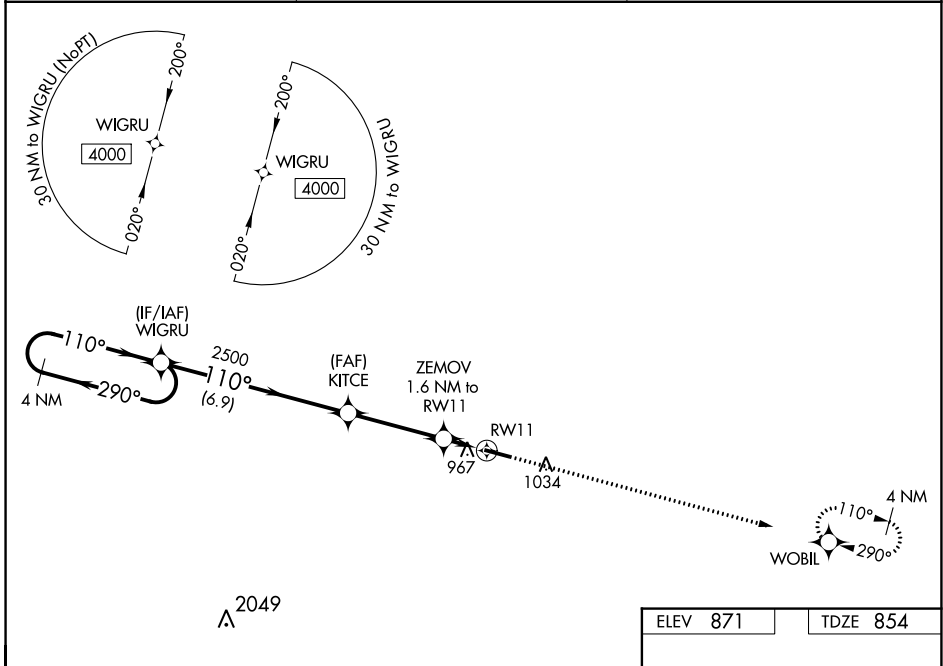
WAAS CH 45722 W11A	APP CRS 110°	Rwy Idg 4876 TDZE 854 Apt Elev 871
--	------------------------	---

RNAV (GPS) RWY 11

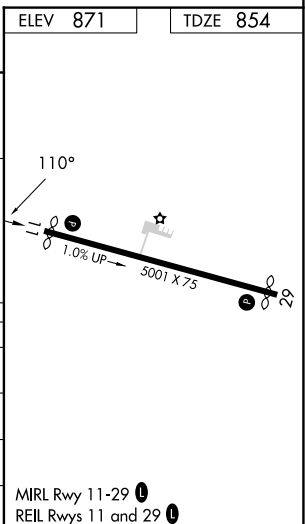
LEBANON SPRINGFIELD-GEORGE HOERTER FLD (6I2)

RNP APCH.	<p>▼ For uncompensated Baro-VNAV systems, LNAV/VNAV NA below -16°C or above 54°C. ▲ When local altimeter setting not received, use Danville altimeter setting and increase all DA 74 feet and all MDA 80 feet. Increase LPV, LNAV/VNAV, and Circling Cat D visibility 1/4 mile and LNAV Cats C/D 3/8 mile. Baro-VNAV NA when using Danville altimeter setting.</p>	<p>MISSED APPROACH: Climb to 4000 direct WOBIL and hold, continue climb-in-hold to 4000.</p>
-----------	---	--

AWOS-3P 119.725	LOUISVILLE APP CON 132.075 327.0	UNICOM 122.8 (CTAF) 0
---------------------------	--	---------------------------------



CATEGORY	A	B	C	D
LPV DA		1104-1	250 (300-1)	
LNAV/VNAV DA		1159-1 1/8	305 (300-1 1/8)	
LNAV MDA		1220-1	366 (400-1)	
C CIRCLING	1320-1 449 (500-1)	1340-1 469 (500-1)	1360-1 1/2 489 (500-1 1/2)	1500-2 629 (700-2)



RNAV (GPS) RWY 11

SE-1, 11 JUL 2024 to 08 AUG 2024

SE-1, 11 JUL 2024 to 08 AUG 2024