

VOR/DME EWO 113.95 Chan 86 (Y)	APP CRS 088°	Rwy Idg 4876 TDZE 854 Apt Elev 871
---------------------------------------------	------------------------	---------------------------------------------------------------

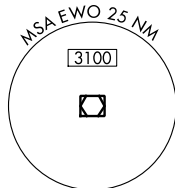
VOR/DME RWY 11

LEBANON SPRINGFIELD-GEORGE HOERTER FLD (6I2)

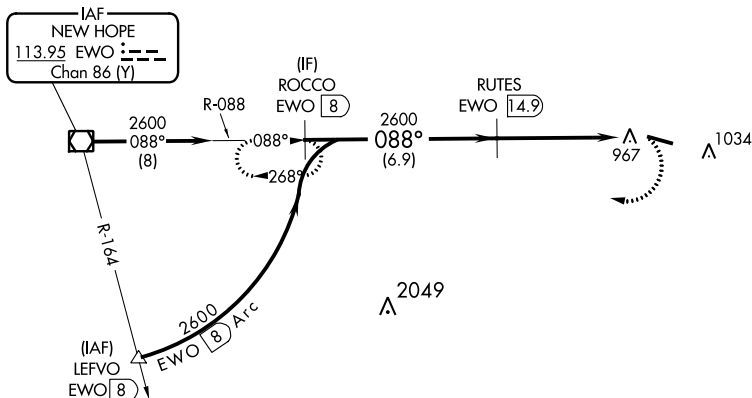
NA When local altimeter setting not received, use Danville altimeter setting and increase all MDA 80 feet and increase Cat C and D visibility ¼ mile. Helicopter visibility reduction below ¾ SM NA.

MISSED APPROACH: Climbing right turn to 4000 on EWO VOR/DME R-088 to ROCCO/EWO 8 DME and hold.

AWOS-3P 119.725	LOUISVILLE APP CON 132.075 327.0	UNICOM 122.8 (CTAF) 0
---------------------------	--------------------------------------------	---------------------------------



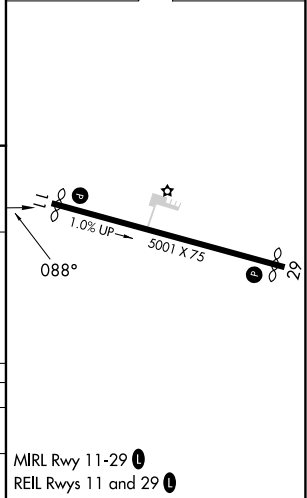
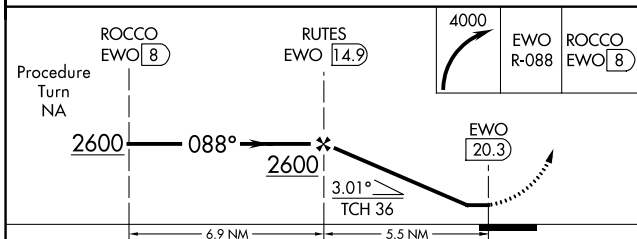
Procedure NA for arrivals at EWO VOR/DME on V178 westbound.



SE-1, 11 JUL 2024 to 08 AUG 2024

SE-1, 11 JUL 2024 to 08 AUG 2024

ELEV 871	TDZE 854
----------	----------



CATEGORY	A	B	C	D
S-11	1300-1	446 (500-1)	1300-1 3/8	446 (500-1 3/8)
CIRCLING	1460-1 589 (600-1)	1460-1 1/4 589 (600-1 1/4)	1460-1 1/2 589 (600-1 1/2)	1500-2 629 (700-2)

MRL Rwy 11-29 0
REIL Rws 11 and 29 0