

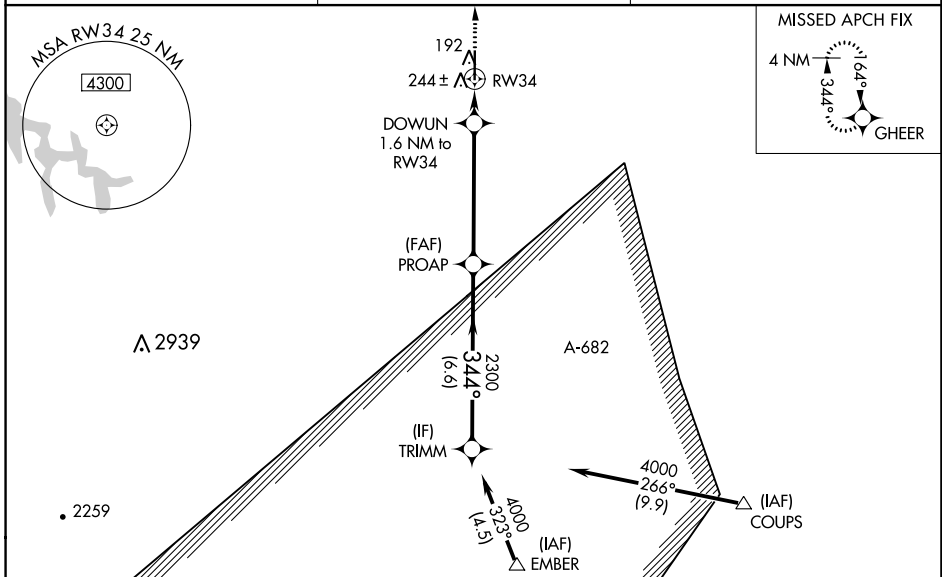
WAAS CH 58319 W34A	APP CRS 344°	Rwy Idg TDZE Apt Elev	6000 100 100
--	------------------------	-----------------------------	---

RNAV (GPS) RWY 34

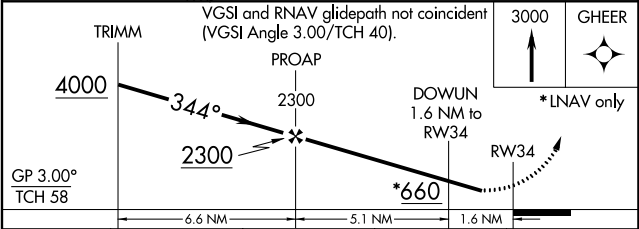
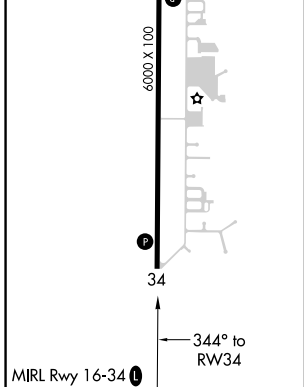
YOLO COUNTY (DWA)

RNP APCH.	When local altimeter setting not received, use Travis AFB altimeter setting and increase all DA 50 feet and all MDA 60 feet, and increase LPV visibility all Cats 1/8 mile, LNAV/VNAV visibility all Cats 1/4 mile, and LNAV Cat C and D visibility 1/4 mile. For uncompensated Baro-VNAV systems, LNAV/VNAV NA below -15°C (5°F) or above 42°C (107°F). Baro-VNAV NA when using Travis AFB altimeter setting.	MISSED APPROACH: Climb to 3000 direct GHEER and hold.
-----------	--	---

AWOS-3P 125.775	TRAVIS APP CON 126.6 281.45	UNICOM 123.0 (CTAF)
---------------------------	---------------------------------------	-------------------------------



ELEV 100	TDZE 100
----------	----------



CATEGORY	A	B	C	D
LPV DA		415-1	315 (400-1)	
LNAV/VNAV DA		425-1	325 (400-1)	
LNAV MDA	500-1	400 (400-1)	500-1 1/8	400 (400-1 1/8)

SW-2, 11 JUL 2024 to 08 AUG 2024

SW-2, 11 JUL 2024 to 08 AUG 2024