

WAAS CH 99730 W21A	APP CRS 217°	Rwy Idg TDZE Apt Elev	5007 1372 1372
--	------------------------	-----------------------------	---

RNAV (GPS) RWY 21

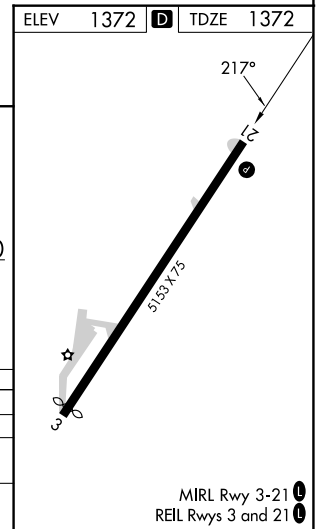
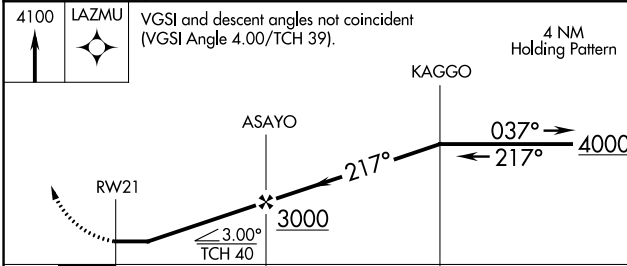
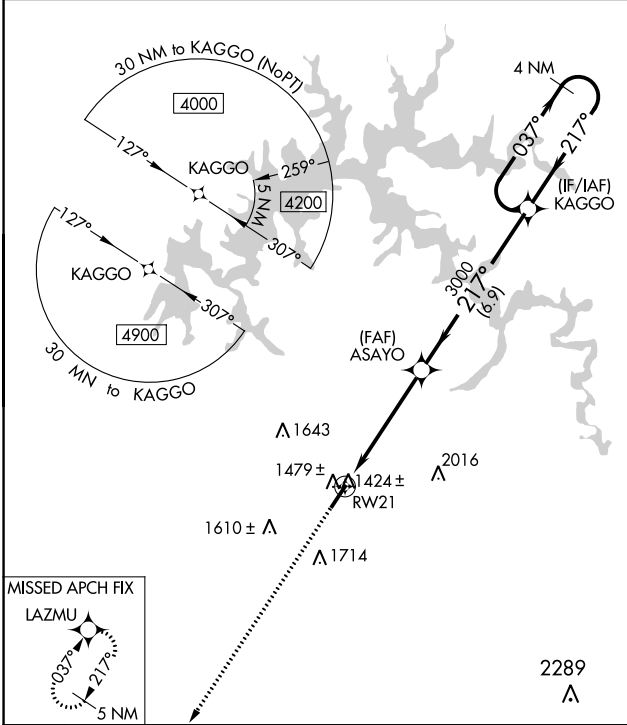
LIVINGSTON MUNI (8A.3)

RNP APCH - GPS.

▼ Circling Rwy 3 NA at night. When local altimeter setting not received, use Crossville altimeter setting and increase all MDA 140 feet; increase LP and LNAV Cats C/D visibility 3/8 mile; increase Circling Cat B visibility 1/4 mile and Circling Cats C/D visibility 1/2 mile. Rwy 21 helicopter visibility reduction below 3/4 SM NA.

MISSED APPROACH:
Climb to 4100 direct LAZMU and hold.

AWOS-3 126.175	INDIANAPOLIS CENTER 124.625 371.925	UNICOM 122.8 (CTAF)
--------------------------	---	-------------------------------



CATEGORY	A	B	C	D
LP MDA		1700-1	328 (400-1)	
LNAV MDA	1760-1	388 (400-1)	1760-1 1/8	388 (400-1 1/8)
CIRCLING	1880-1 508 (600-1)	2080-1 708 (800-1)	2080-2 708 (800-2)	2360-3 988 (1000-3)

MIRL Rwy 3-21
REIL Rwy 3 and 21

SE-1, 11 JUL 2024 to 08 AUG 2024

SE-1, 11 JUL 2024 to 08 AUG 2024