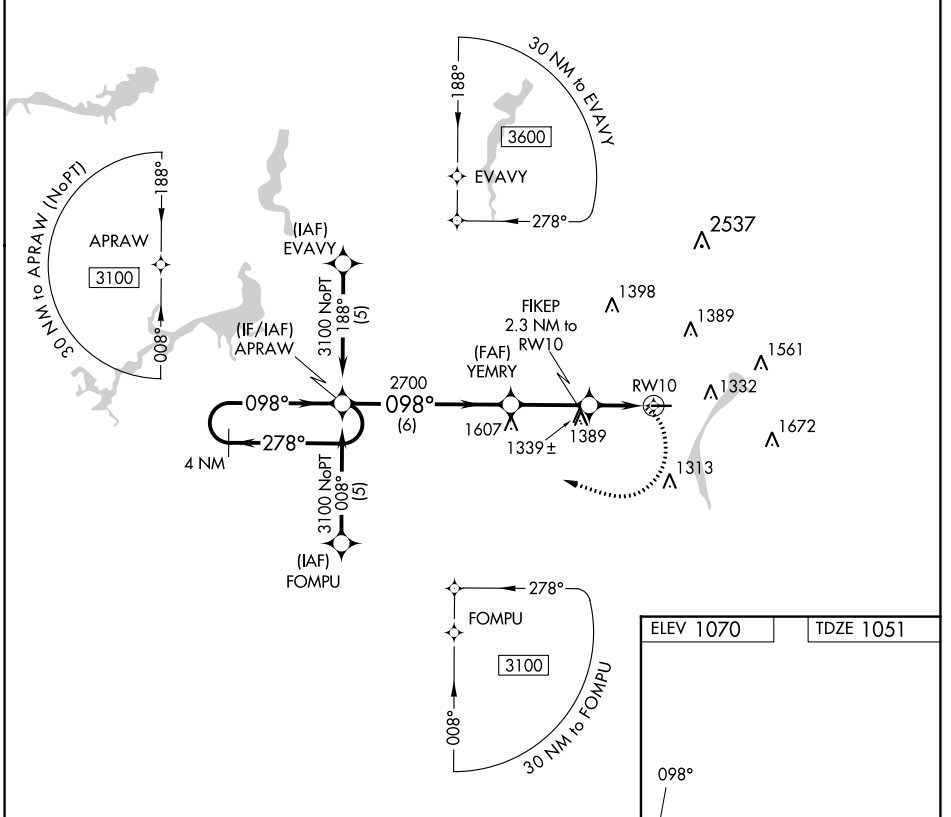


APP CRS	Rwy Idg	3664
098°	TDZE	1051
	Apt Elev	1070

RNAV (GPS) RWY 10

YOUNGSTOWN ELSER METRO (4G4)

RNP APCH.		MISSED APPROACH: Climbing right turn to 3100 direct APRAW and hold.	
<p>▽ Rwy 10 helicopter visibility reduction below 1 SM NA. Obtain local altimeter setting on CTAF; when not received, use New Castle altimeter setting and increase all MDA 40 feet. Procedure NA at night.</p> <p>▲ NA</p>	CLEVELAND APP CON ★ 125.5 371.875	CLNC DEL 119.25	UNICOM 123.05 (CTAF)



EC-2, 11 JUL 2024 to 08 AUG 2024

EC-2, 11 JUL 2024 to 08 AUG 2024

ELEV 1070	TDZE 1051
-----------	-----------

4 NM Holding Pattern	Visual Segment - Obstacles.		3100	APRAW
APRAW	YEMRY	FIKEP 2.3 NM to RW10		
3100	2700	1760		
	6 NM	2.8 NM	2.3 NM	
CATEGORY	A	B	C	D
LNAV MDA	1660-1	609 (600-1)	NA	NA
	MIRL Rwy 10-28 REIL Rwy 10 and 28			