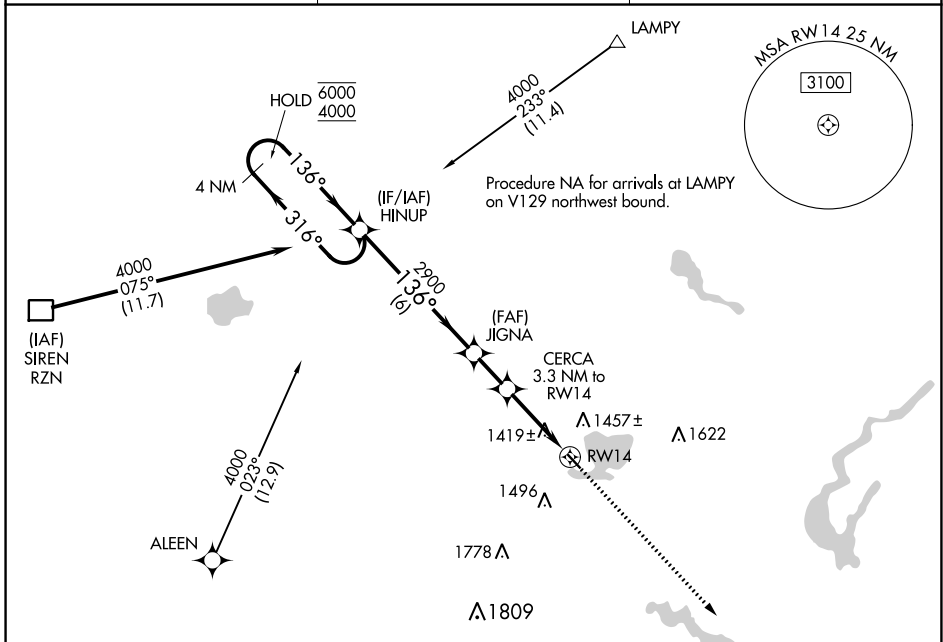


APP CRS	Rwy Idg	2881
136°	TDZE	1233
	Apt Elev	1233

RNAV (GPS) RWY 14

SHELL LAKE MUNI (SSQ)

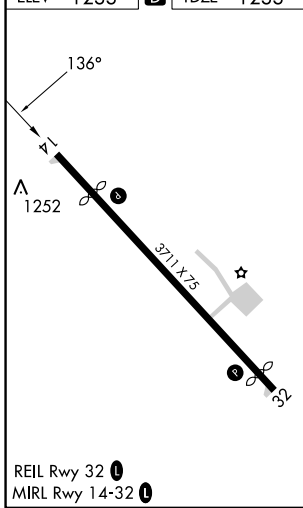
RNP APCH.		MISSED APPROACH: Climb to 4000 direct QESCA and hold.
Procedure NA at night. Rwy 14 helicopter visibility reduction below 1 SM NA. Use Cumberland altimeter setting.		
UBE AWOS-3PT 119.175	MINNEAPOLIS CENTER 126.45 276.4	UNICOM 122.8 (CTAF)



EC-3, 11 JUL 2024 to 08 AUG 2024

EC-3, 11 JUL 2024 to 08 AUG 2024

ELEV 1233	D	TDZE 1233
-----------	----------	-----------



REIL Rwy 32 **1**
MIRL Rwy 14-32 **1**

4 NM Holding Pattern		VGSI and descent angles not coincident (VGSI Angle 4.00/TCH 22).		4000	QESCA
HINUP 6000 ← 316° 4000 → 136°		JIGNA	CERCA	RWY 14	
		2900	3.3 NM to RWY 14		
		3.04° TCH 40	2320		
		6 NM	1.7 NM	3.3 NM	
CATEGORY	A	B	C	D	
LNAV MDA	1740-1	507 (600-1)	1740-1½	507 (600-1½)	
CIRCLING	1840-1	607 (700-1)	1840-1¾	2020-2½ 607 (700-1¾) 787 (800-2½)	