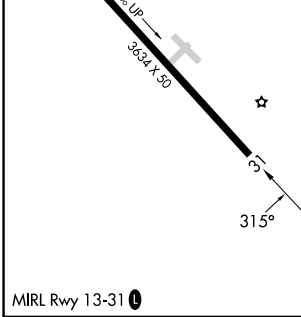
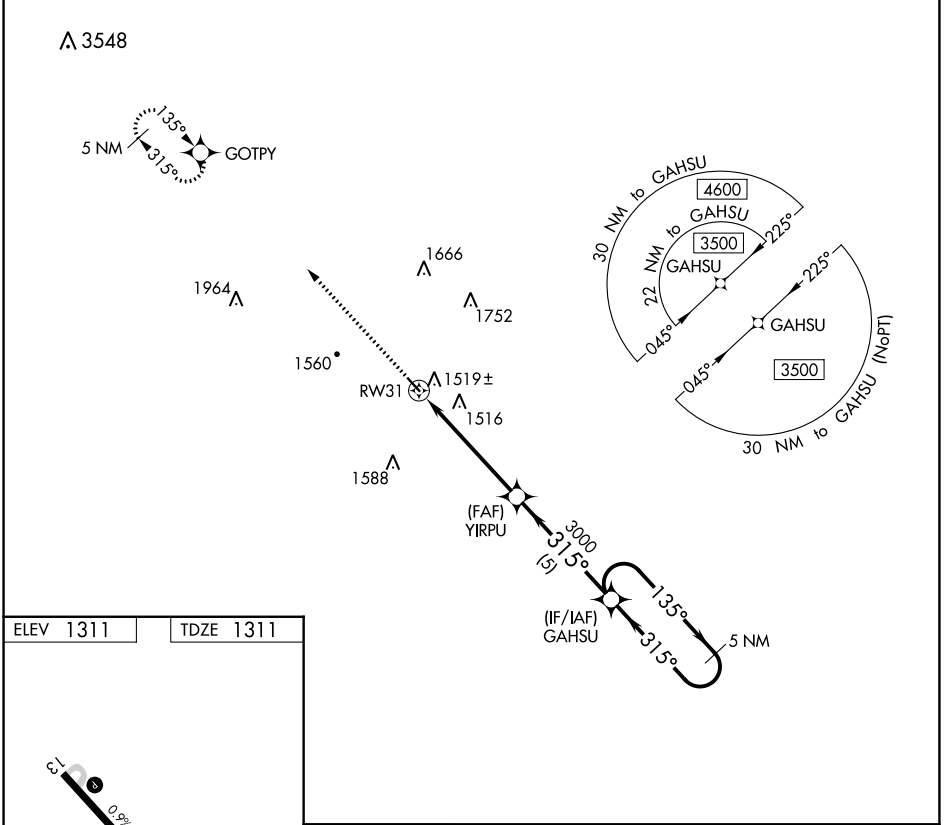


APP CRS	Rwy Idg	<b>3634</b>
<b>315°</b>	TDZE	<b>1311</b>
	Apt Elev	<b>1311</b>

# RNAV (GPS) RWY 31

AVA BILL MARTIN MEML (AOV)

RNP APCH.		MISSED APPROACH: Climb to 4600 direct GOTPY and hold, continue climb-in-hold to 4600.
<p>Procedure NA at night. Rwy 31 helicopter visibility reduction below 1 SM NA.</p> <p>Use Branson altimeter setting, if not received use Springfield Branson Natl altimeter setting and increase all MDA 20 feet.</p>		
BBG AWOS-3 <b>124.625</b>	SPRINGFIELD APP CON <b>126.35</b>	UNICOM <b>122.7 (CTAF) 0</b>



4600	GOTPY	Visual Segment - Obstacles.		GAHSU
↑	✦	YIRPU	5 NM Holding Pattern	
		RW31	3000	3500
		5.2 NM	5 NM	135° → 315° ←
CATEGORY	A	B	C	D
LNAV MDA	1860-1	549 (600-1)	NA	

NC-3, 11 JUL 2024 to 08 AUG 2024

NC-3, 11 JUL 2024 to 08 AUG 2024