

VORTAC DGD <b>109.4</b> Chan <b>31</b>	APP CRS <b>107°</b>	Rwy Idg TDZE Apt Elev <b>N/A</b> <b>N/A</b> <b>1311</b>
--	------------------------	--

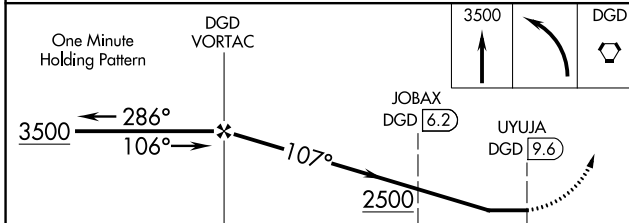
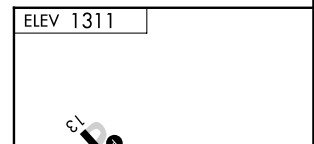
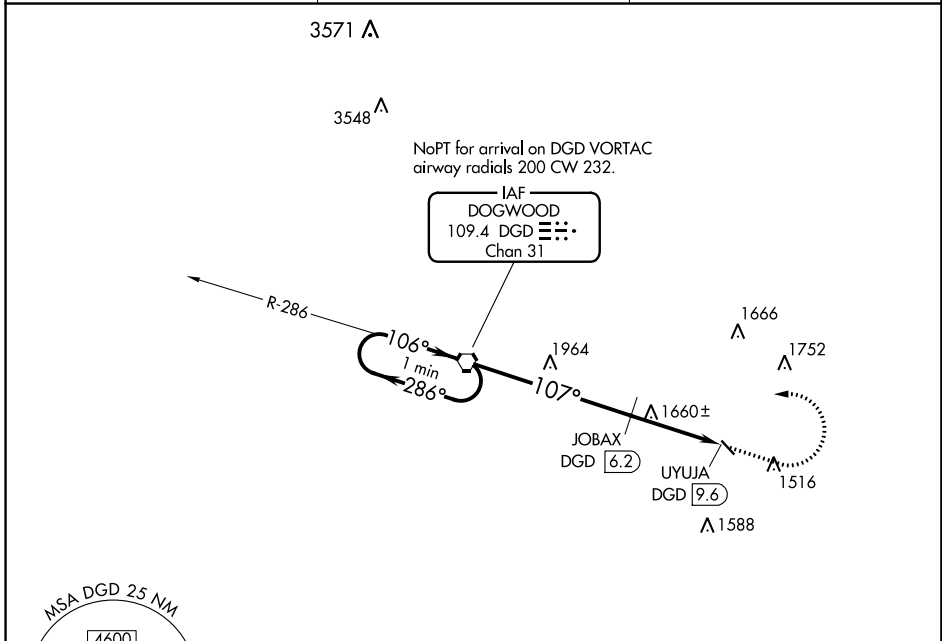
# VOR-A

AVA BILL MARTIN MEML (AOV)

**Procedure NA at night.**  
**NA** Use Branson altimeter setting, when not received use Springfield Branson Natl altimeter setting.

**MISSED APPROACH:** Climb to 3500 then left turn direct DGD VORTAC and hold.

BBG AWOS-3 <b>124.625</b>	SPRINGFIELD APP CON <b>126.35</b>	UNICOM <b>122.7 (CTAF)</b>
------------------------------	--------------------------------------	-------------------------------



CATEGORY	A	B	C	D
CIRCLING	2500-1 $\frac{1}{4}$ 1189 (1200-1 $\frac{1}{4}$ )	2500-1 $\frac{1}{2}$ 1189 (1200-1 $\frac{1}{2}$ )		NA
JOBAX FIX MINIMUMS (DME REQUIRED)				
CIRCLING	2020-1	709 (800-1)		NA

MIRL Rwy 13-31					
FAF to MAP 9.6 NM					
Knots	60	90	120	150	180
Min:Sec	9:36	6:24	4:48	3:50	3:12

NC-3, 11 JUL 2024 to 08 AUG 2024

NC-3, 11 JUL 2024 to 08 AUG 2024

# VOR-A