

WAAS CH 77724 W31A	APP CRS 305°	Rwy Idg 4000 TDZE 261 Apt Elev 264
--	------------------------	---

RNAV (GPS) RWY 31

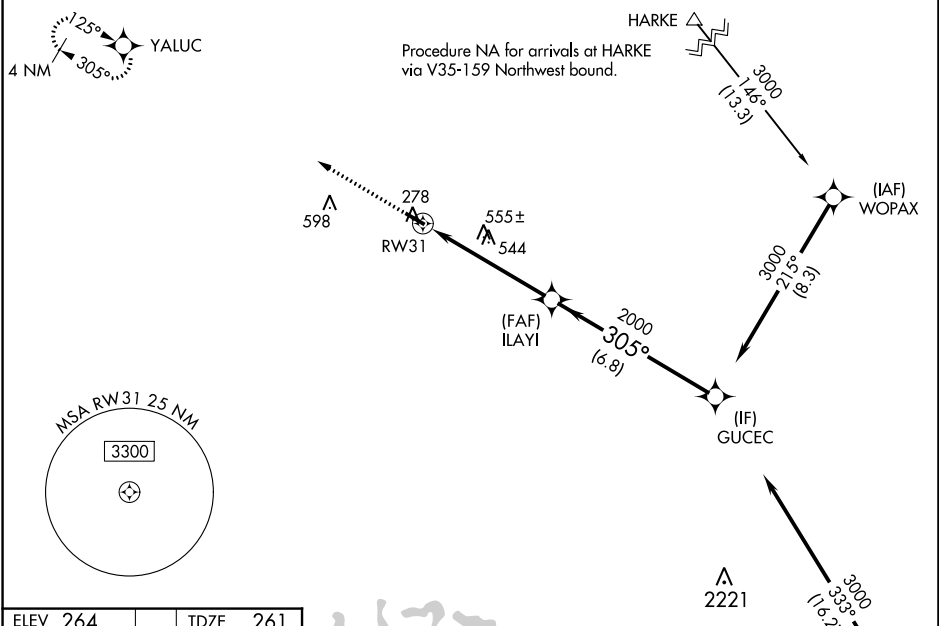
CAIRO-GRADY COUNTY (70J)

▼ Baro-VNAV NA. For uncompensated Baro-VNAV systems, LNAV/VNAV NA below -15°C (5°F) or above 42°C (107°F). DME/DME RNP-0.3 NA. Visibility reduction by helicopters NA.
▲ NA Use Moultrie altimeter setting, when not received, use Tallahassee Intl altimeter setting and increase LPV DA to 609, LNAV/VNAV DA to 653, and all MDA 60 feet; increase LPV and LNAV/VNAV all Cats and LNAV Cats C/D visibility 1/8 SM and increase Circling Cats C/D visibility 1/4 SM.

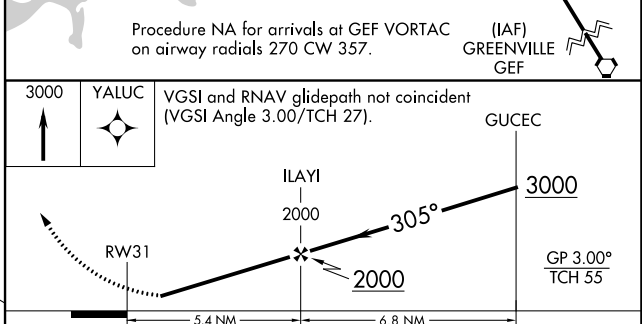
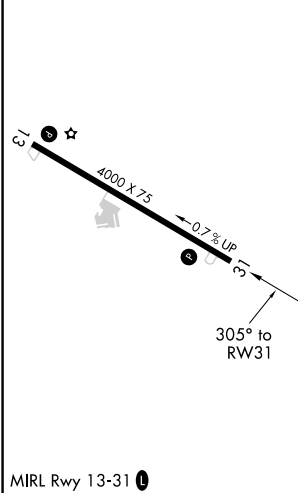
MISSED APPROACH:
Climb to 3000 direct YALUC and hold.

TALLAHASSEE APP CON*
128.7 254.3

UNICOM
122.7 (CTAF)



ELEV 264	TDZE 261
----------	----------



CATEGORY	A	B	C	D
LPV DA	565-1 304 (300-1)			
LNAV/VNAV DA	609-1 348 (400-1 1/8)			
LNAV MDA	900-1	639 (700-1)	900-1 7/8	639 (700-1 1/8)
CIRCLING	900-1	636 (700-1)	1020-2 1/4 756 (800-2 1/4)	1020-2 1/2 756 (800-2 1/2)

SE-4, 11 JUL 2024 to 08 AUG 2024

SE-4, 11 JUL 2024 to 08 AUG 2024