

HI-ILS W or LOC W RWY 13

LOC/DME I-NOG 110.5 Chan 42	APCH CRS 130°	Rwy Idg TDZE Arprt Elev 8001 257 257
---	-------------------------	--

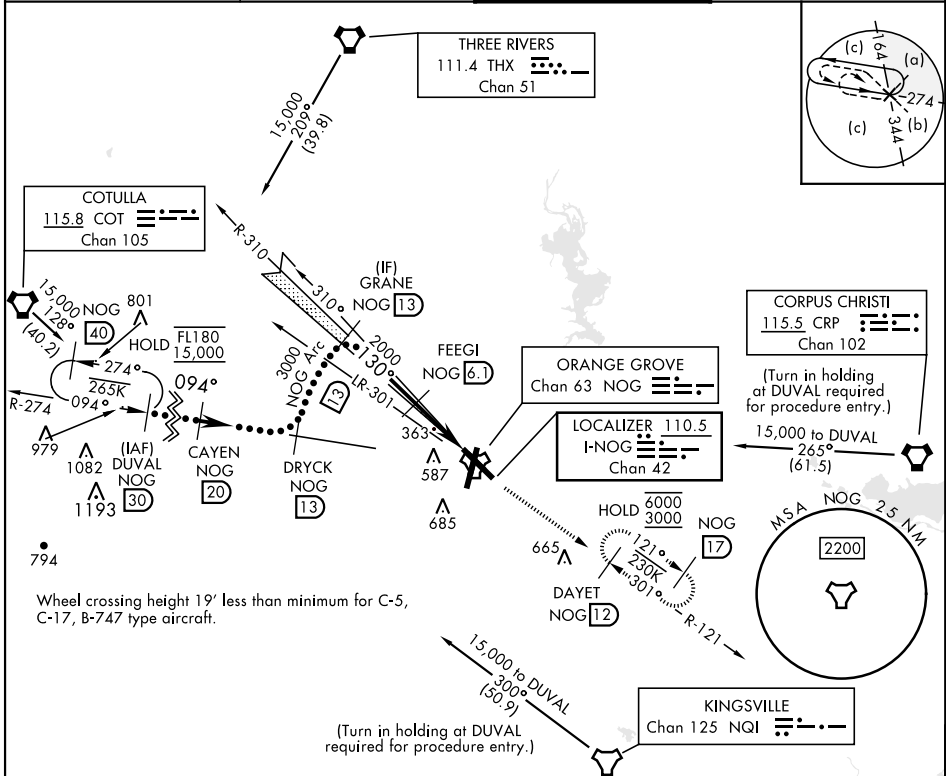
[USN]

ORANGE GROVE NALF (KNOG)

TACAN required

MISSED APPROACH: Climb to 700 then climbing to 3000 intercept NOG TACAN R-121 to DAYET and hold.

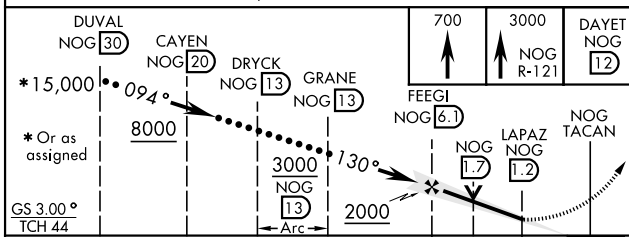
ATIS ★ 254.35	KINGSVILLE APP CON 119.90 290.45	TOWER ★ 128.4 281.425	GND CON 229.4
-------------------------	--	---------------------------------	-------------------------



Wheel crossing height 19' less than minimum for C-5, C-17, B-747 type aircraft.

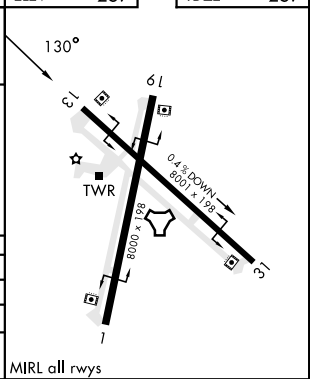
(Turn in holding at DUVAL required for procedure entry.)

EMERG SAFE ALT 100 NM 16,200



ELEV 257	TDZE 257
----------	----------

CATEGORY	C	D	E
S-ILS 13	457-1	200 (200-1)	
S-LOC 13	620-1	363 (400-1)	
CIRCLING	920-1¾ 663 (700-1¾)	1000-2½ 743 (800-2½)	1000-2¾ 743 (800-2¾)



HI-ILS W or LOC W RWY 13

SC-3, 11 JUL 2024 to 08 AUG 2024

SC-3, 11 JUL 2024 to 08 AUG 2024