

TACAN RWY 31

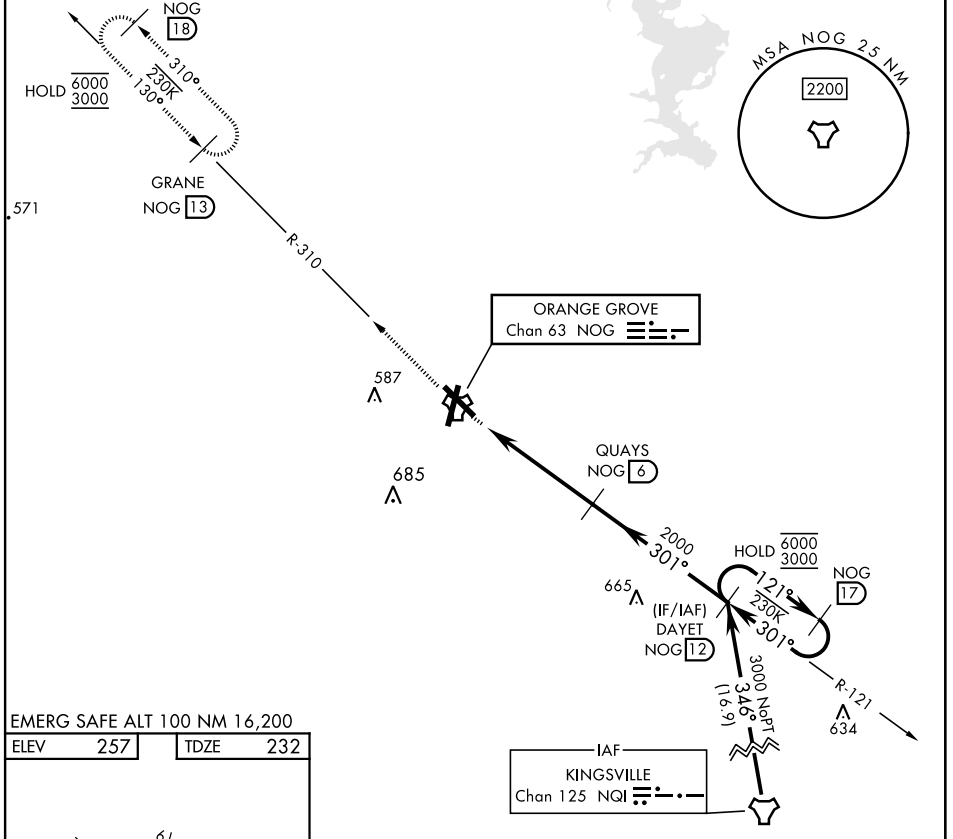
TACAN Chan 63	APCH CRS 301°	Rwy Idg TDZE Arprt Elev	8001 232 257
-------------------------	-------------------------	-------------------------------	---

[USN]

ORANGE GROVE NALF (KNOG)

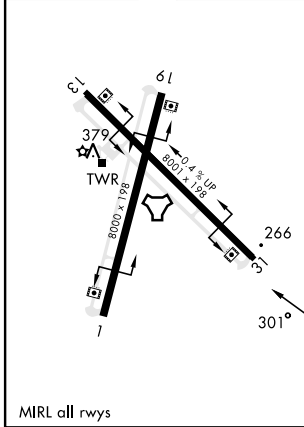
MISSED APPROACH: Climb to 700 then climb to 3000 intercept NOG TACAN R-310 to GRANE and hold.

ATIS ★ 254.35	KINGSVILLE APP CON 119.90 290.45	TOWER ★ 128.4 281.425	GND CON 229.4
-------------------------	--	---------------------------------	-------------------------



EMERG SAFE ALT 100 NM 16,200

ELEV	257	TDZE	232
------	-----	------	-----



700	3000	GRANE NOG 13	DAYET NOG 12	NOG 17
↑	↻	↻	↻	↻
NOG TACAN	PEKEE NOG 11	QUAYS NOG 6	DAYET NOG 12	NOG 17
0.5	4.9 NM	2000	6000	3000
3.01°	TCH 50	301°	121°	301°
CATEGORY	A	B	C	D
S-31	520-1		288	(300-1)
CIRCLING	720-1	463 (500-1)	920-1¾ 663 (700-1¾)	1000-2½ 743 (800-2½)

TACAN RWY 31

SC-3, 11 JUL 2024 to 08 AUG 2024

SC-3, 11 JUL 2024 to 08 AUG 2024