

WAAS CH <b>77931</b> <b>W33A</b>	APP CRS <b>338°</b>	Rwy Idg TDZE Apt Elev	<b>4500</b> <b>1384</b> <b>1394</b>
--	------------------------	-----------------------------	---

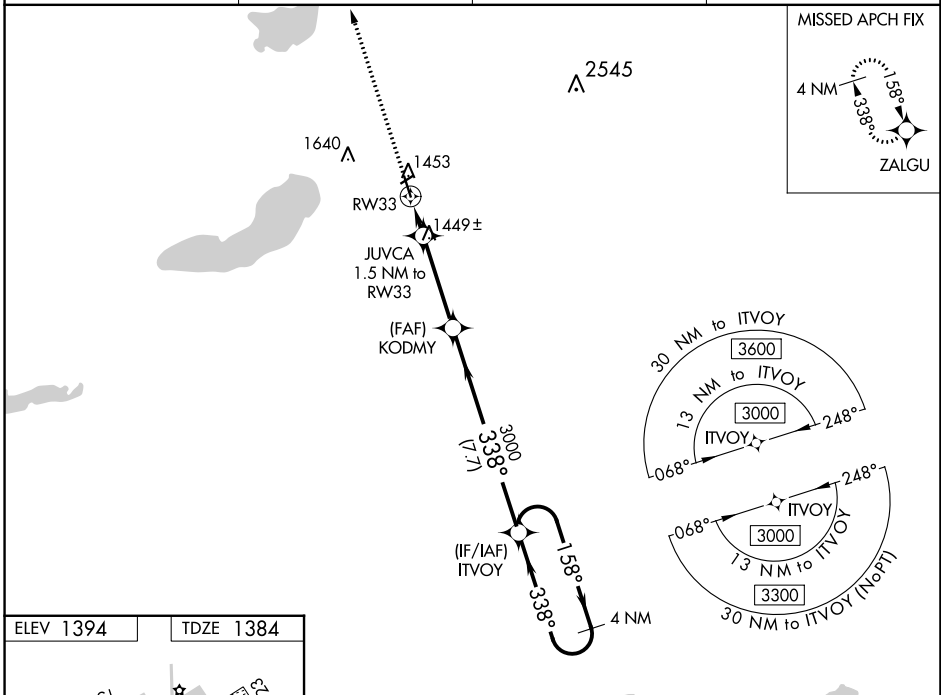
# RNAV (GPS) RWY 33

GLENWOOD MUNI (GHW)

**⚠** Baro-VNAV NA when using Alexandria altimeter setting. For uncompensated Baro-VNAV systems, LNAV/VNAV NA below -17°C (2°F) or above 54°C (130°F). DME/DME RNP-0.3 NA. Helicopter visibility reduction below 1 SM NA. When local altimeter setting not received, use Alexandria altimeter setting and increase all DA 36 feet and all MDA 40 feet. Circling NA to Rwy 5/23.

**⚠** MISSED APPROACH: Climb to 3000 direct ZALGU and hold.

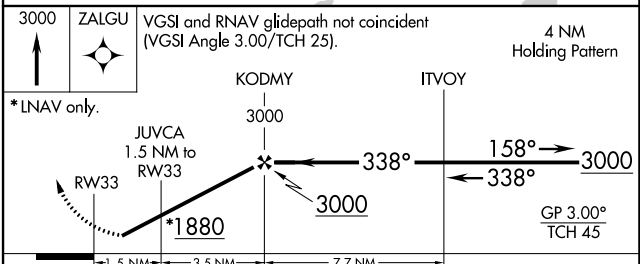
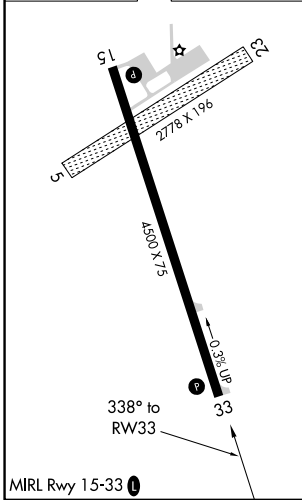
AWOS-3 <b>118.925</b>	MINNEAPOLIS CENTER <b>126.1 269.2</b>	GCO <b>121.725</b>	CTAF <b>122.9 0</b>
--------------------------	--	-----------------------	------------------------



NC-1, 11 JUL 2024 to 08 AUG 2024

NC-1, 11 JUL 2024 to 08 AUG 2024

ELEV 1394	TDZE 1384
-----------	-----------



CATEGORY	A	B	C	D
LPV DA		1634-1 250 (300-1)		NA
LNAV/VNAV DA		1634-1 250 (300-1)		NA
LNAV MDA		1700-1 316 (400-1)		NA
CIRCLING	1840-1 446 (500-1)	1860-1 466 (500-1)	1940-1½ 546 (600-1½)	NA