

| | | | |
|----------------|-------------|----------|-------------|
| VORTAC TKO | APP CRS | Rwy Idg | 4018 |
| 109.8 | 153° | TDZE | 1418 |
| Chan 35 | | Apt Elev | 1418 |

VOR RWY 17

MORITZ MEML (K61)

DME required. DME required for procedure entry.

NA Rwy 17 helicopter visibility reduction below 1 SM NA. Circling Rwy 4, 8, 22 and 26 NA. Straight-in Rwy 17 NA at night, Circling Rwy 17 NA at night. When local altimeter setting not received, use Concordia altimeter setting and increase all MDA 80 feet and all Cat C visibilities ¼ SM.

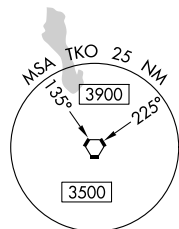
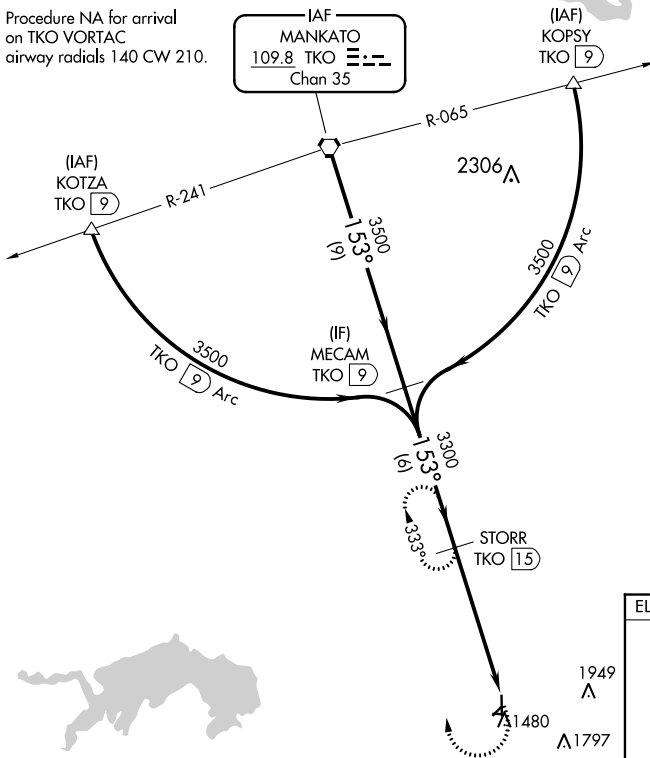
MISSED APPROACH: Climb to 2800 then climbing right turn to 3300 on heading 020° and TKO R-153 to STORR/15 DME and hold.

AWOS-3PT
118.225

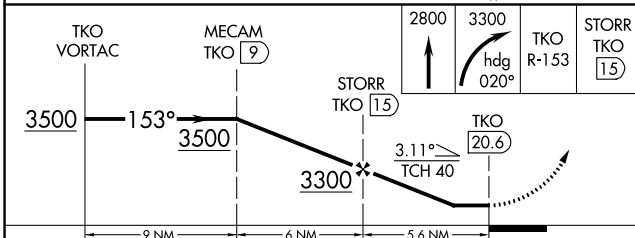
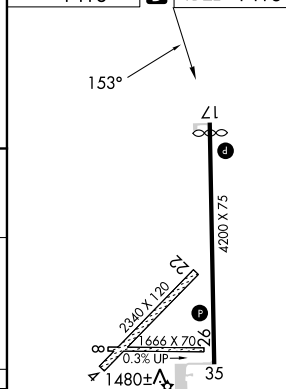
KANSAS CITY CENTER
134.9 363.2

UNICOM
122.8 (CTAF) 0

Procedure NA for arrival on TKO VORTAC
airway radials 140 CW 210.



ELEV 1418 **D** TDZE 1418



| CATEGORY | A | B | C | D |
|-------------------|-----------------------|-------------------------|-------------------------|----|
| S-17 | 2040-1 | 622 (700-1) | 2040-1¾ 622 (700-1¾) | NA |
| C CIRCLING | 2040-1 622 (700-1) | 2260-1¼ 842 (900-1¼) | 2260-2½ 842 (900-2½) | NA |

MIRL Rwy 17-35