

WYLSN EIGHT DEPARTURE (RNAV)

HOUSTON, TEXAS

AWOS-3
 123.625
 CLNC DEL
 120.8
 CTAF
 123.0
 HOUSTON DEP CON
 123.8 257.7

NOTE: RADAR required.
 NOTE: DME/DME/IRU or GPS required.
 NOTE: RNAV 1.

TAKEOFF MINIMUMS

Rwy 9, 27: Standard with minimum
 climb of 500' per NM to 580.

DEPARTURE ROUTE DESCRIPTION

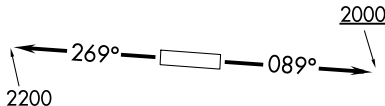
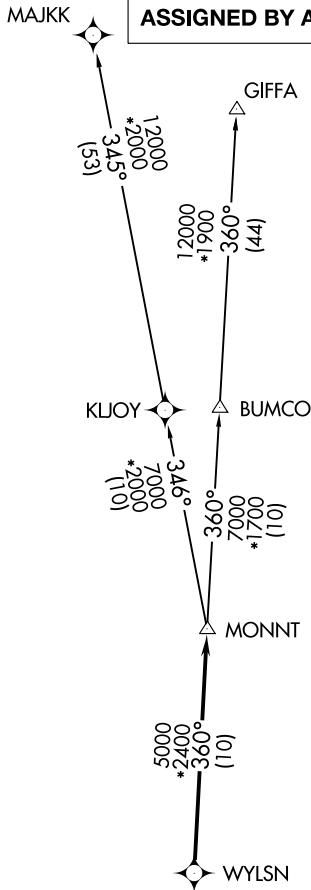
TAKEOFF RUNWAY 9: Climb on heading
 089° to 2000 for RADAR vectors to WYLSN,
 thence. . . .

TAKEOFF RUNWAY 27: Climb on heading
 269° to 2200 for RADAR vectors to WYLSN,
 thence. . . .

. . . .on track 360° to MONNT, then on
 (transition). Maintain ATC assigned altitude.
 Expect filed altitude 10 minutes after departure.

GIFFA TRANSITION (WYLSN8.GIFFA)
MAJJK TRANSITION (WYLSN8.MAJJK)

**TOP ALTITUDE:
 ASSIGNED BY ATC**



NOTE: Chart not to scale.

SC-5, 11 JUL 2024 to 08 AUG 2024

SC-5, 11 JUL 2024 to 08 AUG 2024