

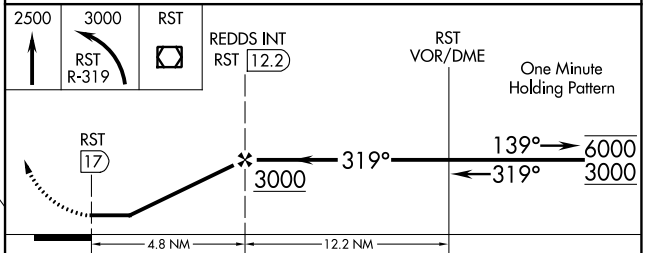
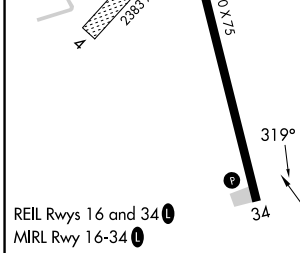
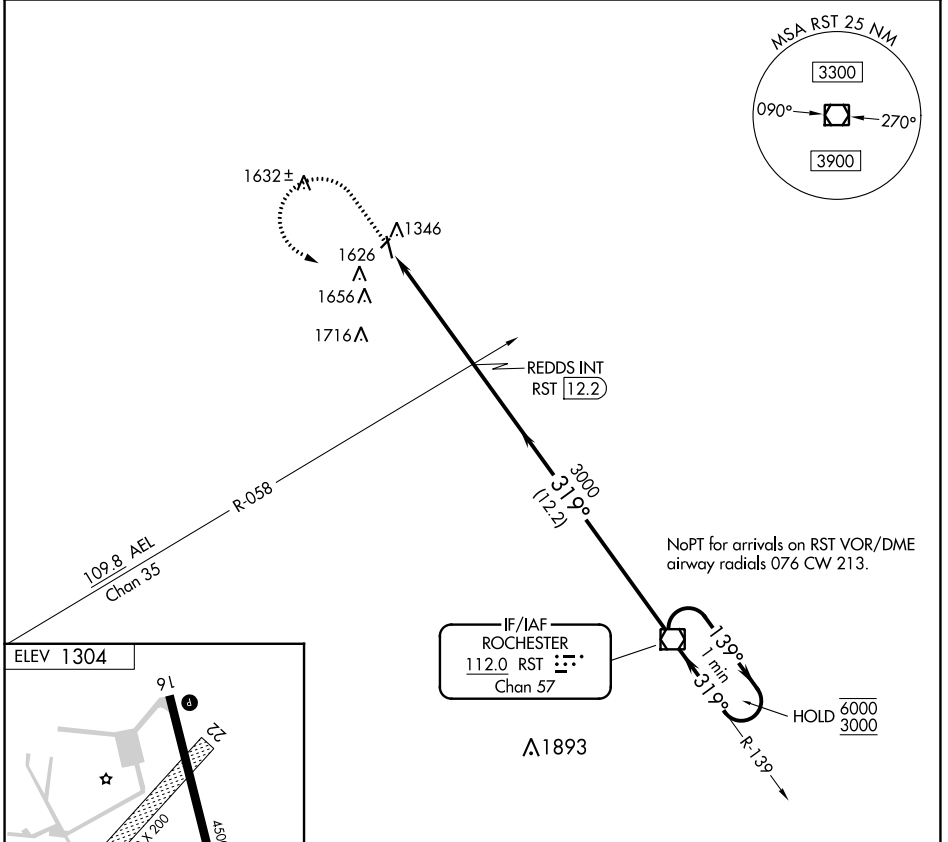
VOR/DME RST 112.0 Chan 57	APP CRS 319°	Rwy Idg TDZE Apt Elev N/A N/A 1304
---	------------------------	--

VOR-A
DODGE CENTER (TOB)

⚠ Circling NA to Rwy 4 and 22. When local altimeter setting not received, use Rochester altimeter setting and increase all MDAs 60 feet and visibility Cat C ¼ SM.

MISSED APPROACH: Climb to 2500 then climbing left turn to 3000 on RST VOR/DME R-319 to RST VOR/DME and hold.

AWOS-3 119.075	ROCHESTER APP CON * 119.8 251.125	CTAF 122.9
--------------------------	---	----------------------



FAF to MAP 4.8 NM						
Knots	60	90	120	150	180	
Min:Sec	4:48	3:12	2:24	1:55	1:36	
CATEGORY	A		B		C	D
CIRCLING	1960-1		656 (700-1)		1960-1¾ 656 (700-1¾)	NA

NC-1, 11 JUL 2024 to 08 AUG 2024

NC-1, 11 JUL 2024 to 08 AUG 2024