

WAAS CH <b>82138</b> <b>W30A</b>	APP CRS <b>299°</b>	Rwy Idg TDZE Apt Elev	<b>3638</b> <b>134</b> <b>134</b>
----------------------------------------	------------------------	-----------------------------	-----------------------------------------

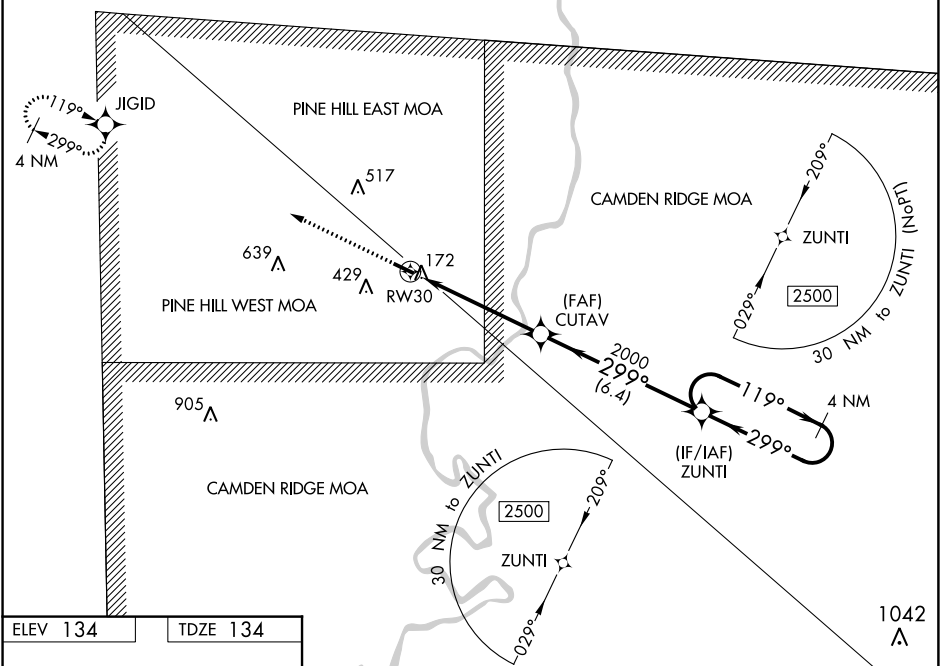
# RNAV (GPS) RWY 30

BUTLER/CHOCTAW COUNTY (Ø9A)

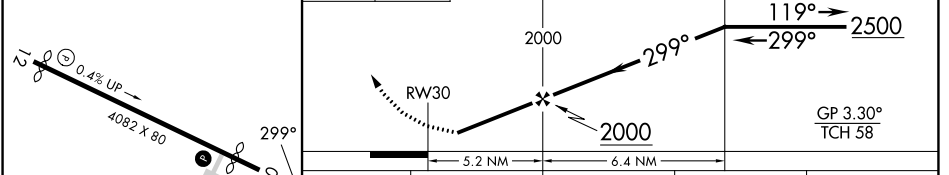
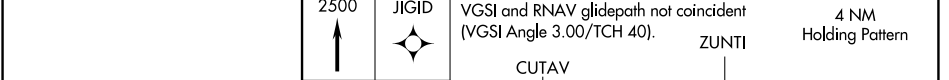
**▼** Baro-VNAV NA. DME/DME RNP-0.3 NA. Helicopter visibility reduction below ¾ SM NA.  
**▲ NA** Procedure NA at night. Use Demopolis altimeter setting; when not received, use Key Fld altimeter setting and increase LPV DA to 497, LNAV/VNAV DA to 487; and increase all MDA 60 feet; increase LPV visibility all Cats ¼ mile and increase Circling Cat C visibility ¼ mile.

**MISSED APPROACH:**  
Climb to 2500 direct JIGID and hold.

DYA AWOS-3P <b>119.475</b>	MERIDIAN APP CON * <b>121.275 348.7</b>	UNICOM <b>122.8 (CTAF) Ø</b>
-------------------------------	--------------------------------------------	---------------------------------



ELEV 134	TDZE 134
----------	----------



CATEGORY	A	B	C	D
LPV DA		450-1 316 (400-1)		NA
LNAV/VNAV DA		440-1 306 (400-1)		NA
LNAV MDA	580-1	446 (500-1)	580-1 3/8 446 (500-1 3/8)	NA
<b>☐</b> CIRCLING	680-1 546 (600-1)	800-1 666 (700-1)	800-1 3/4 666 (700-1 3/4)	NA

SE-4, 11 JUL 2024 to 08 AUG 2024

SE-4, 11 JUL 2024 to 08 AUG 2024