

APP CRS	Rwy Idg	2943
094°	TDZE	818
	Apt Elev	818

RNAV (GPS) RWY 9

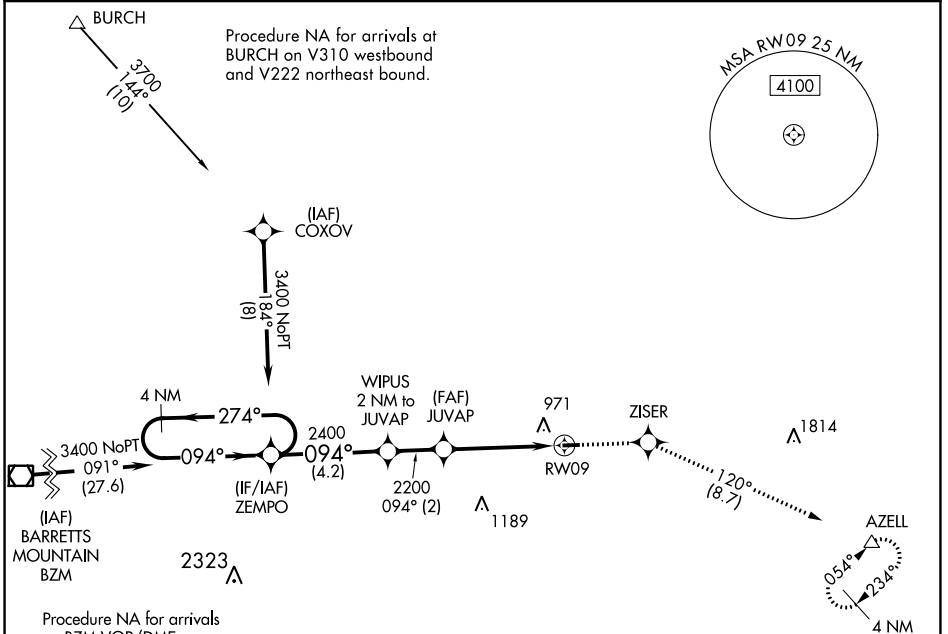
TWIN LAKES (8A7)

RNP APCH.

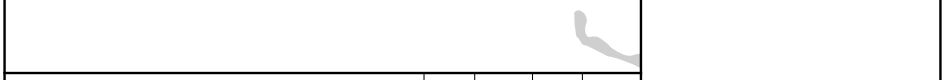
▽ Use Davidson County Exec altimeter setting; when not received, use Smith Reynolds altimeter setting and increase all MDA 40 feet. Procedure NA at night.
▲ Rwy 9 helicopter visibility reduction below 1 SM NA.

MISSED APPROACH: Climb to 3000 direct ZISER and on track 120° to AZELL and hold.

EXX AWOS-3 119.825	GREENSBORO APP CON 124.35 269.225	UNICOM 122.7 (CTAF)
------------------------------	---	-------------------------------



ELEV 818	TDZE 818
----------	----------



4 NM Holding Pattern	ZEMPO	WIPUS 2 NM to JUVAP	JUVAP	ZISER tr 120°	AZELL
3400	274°	094°	2400	2200	RW09
	4.2 NM	2 NM	4.3 NM		

CATEGORY	A	B	C	D
LNAV MDA	1320-1	502 (600-1)	NA	NA
CIRCLING	1380-1 562 (600-1)	1400-1 582 (600-1)	NA	NA

IIRL Rwy 9-27

SE-2, 11 JUL 2024 to 08 AUG 2024

SE-2, 11 JUL 2024 to 08 AUG 2024