

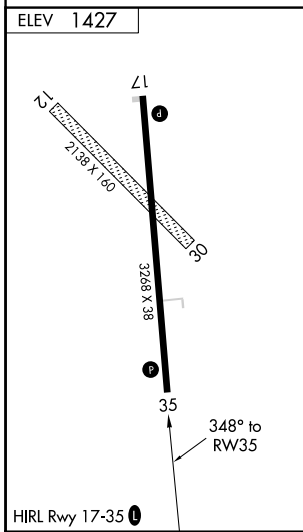
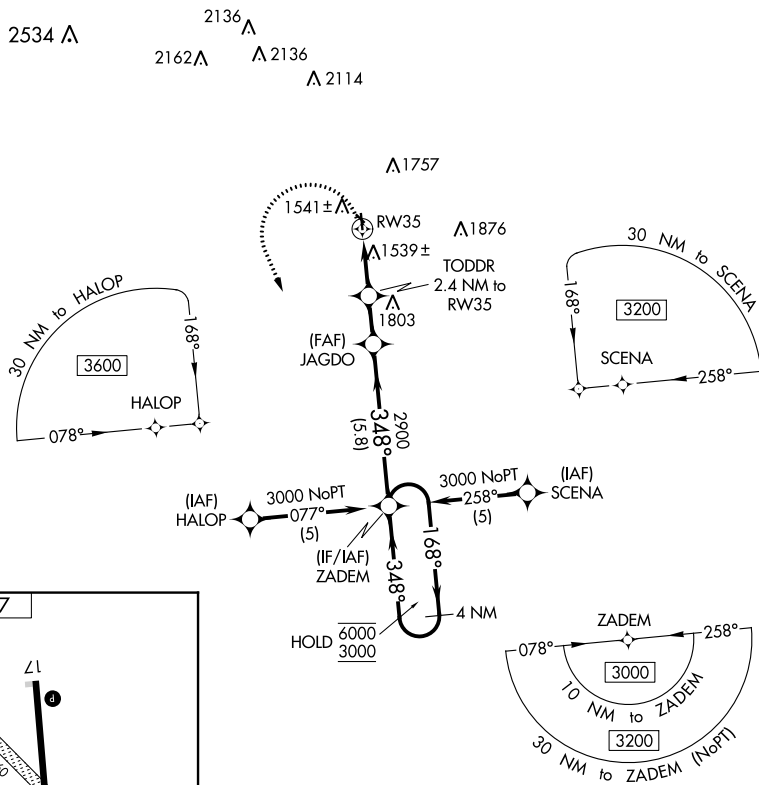
APP CRS	Rwy Idg	N/A
348°	TDZE	N/A
	Apt Elev	1427

RNAV (GPS)-A

HARPER MUNI (8K2)

RNP APCH.	<p>▼ Circling NA to Rwys 12 and 30. Procedure NA at night.</p> <p>▲ NA Use Wichita Dwight D Eisenhower Ntl altimeter setting; when not received, procedure NA.</p>	MISSED APPROACH: Climbing left turn to 3000 direct ZADEM and hold.
-----------	--	--

ICT ASOS 125.15	WICHITA APP CON 126.7 353.5	AUNICOM 122.9 (CTAF) 0
---------------------------	---------------------------------------	----------------------------------



3000	ZADEM	VGSi and descent angles not coincident (VGSi Angle 3.25/TCH 58).		ZADEM	4 NM Holding Pattern
<p>JAGDO</p> <p>TODDR 2.4 NM to RW35</p> <p>3.25° TCH 40</p> <p>2900</p> <p>2300</p> <p>2.4 NM</p> <p>1.7 NM</p> <p>5.8 NM</p>		<p>ZADEM</p> <p>168° → 6000</p> <p>← 348° 3000</p>			
CATEGORY	A	B	C	D	
C CIRCLING	2020-1 593 (600-1)		NA		

NC-2, 11 JUL 2024 to 08 AUG 2024

NC-2, 11 JUL 2024 to 08 AUG 2024