

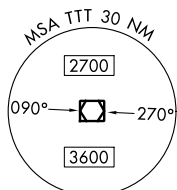
JOE POOL SEVEN DEPARTURE

REGIONAL DEP CON
124.3 282.275
CLNC DEL (when twr closed)
121.35
GND CON
121.875
MC KINNEY TOWER★
118.825 (CTAF)

RADAR and DME required.

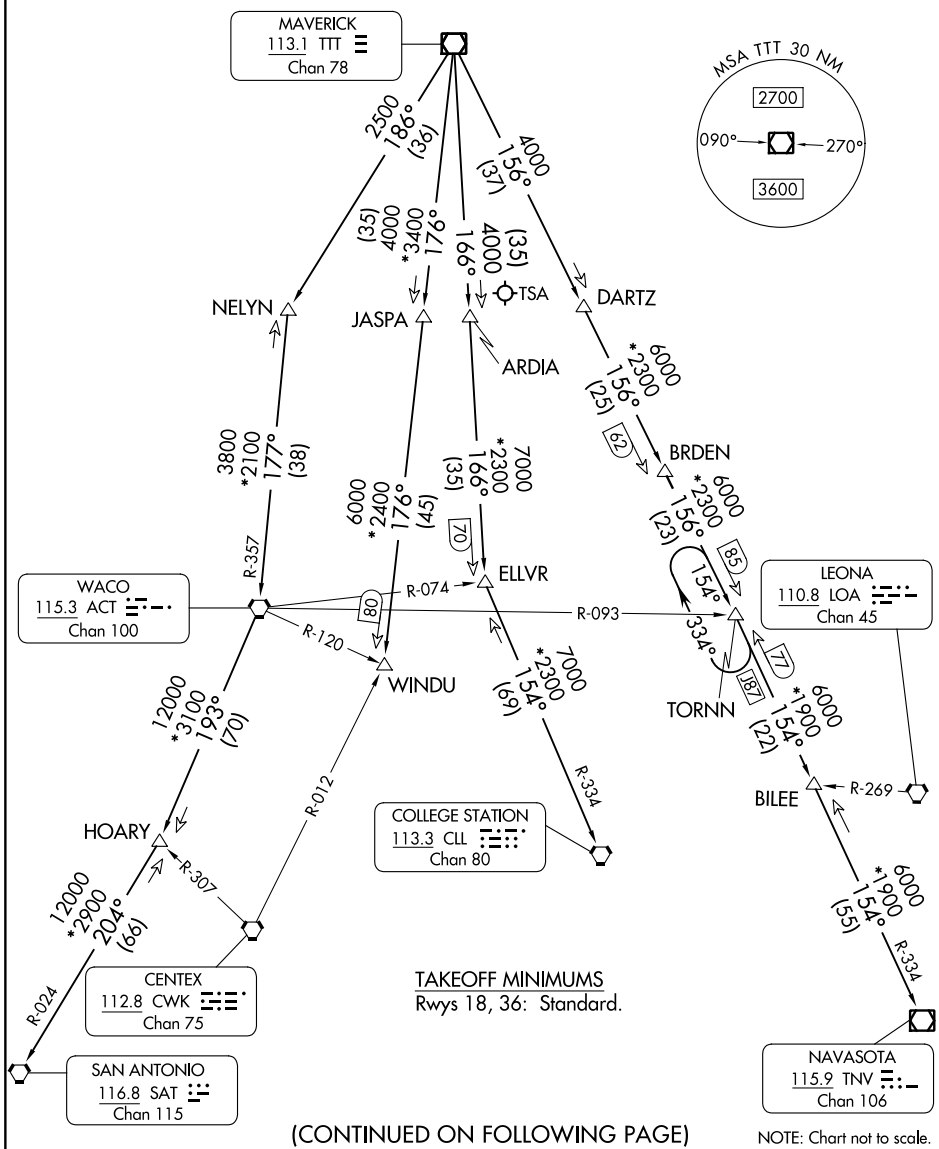
**TOP ALTITUDE:
ASSIGNED BY ATC**

MAVERICK
113.1 TTT
Chan 78



SC-2, 11 JUL 2024 to 08 AUG 2024

SC-2, 11 JUL 2024 to 08 AUG 2024



TAKEOFF MINIMUMS
Rwys 18, 36: Standard.

(CONTINUED ON FOLLOWING PAGE)

NOTE: Chart not to scale.

JOE POOL SEVEN DEPARTURE