

VORTAC FGT 115.7 Chan 104	APP CRS 085°	Rwy Idg 4099 TDZE 961 Apt Elev 961
---	------------------------	---

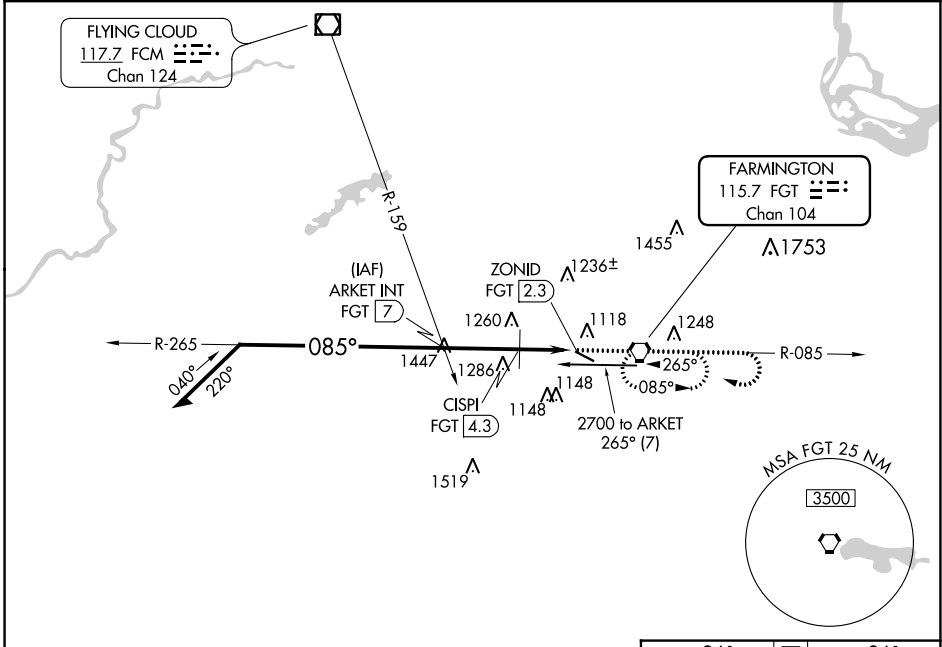
VOR RWY 12

AIRLAKE (LVN)

⚠ Rwy 12 helicopter visibility reduction below 1 SM NA.
Straight-in Rwy 12, Circling Rwy 12 at night, operational VGSJ required, remain on or above VGSJ glidepath until threshold.

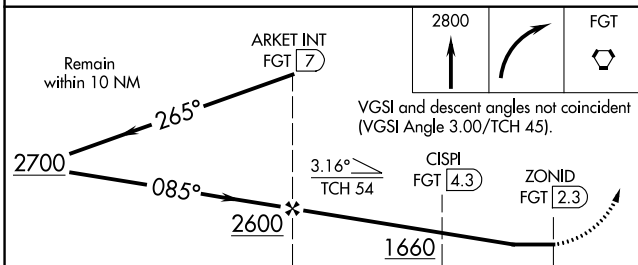
MISSED APPROACH: Climb to 2800 then right turn direct FGT VORTAC and hold.

AWOS-3 118.0	MINNEAPOLIS APP CON 134.7 284.7	CLNC DEL 118.95	UNICOM 123.0 (CTAF) 0
------------------------	---	---------------------------	---------------------------------



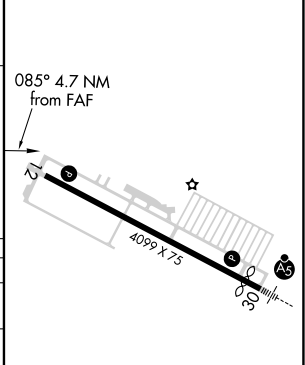
NC-1, 11 JUL 2024 to 08 AUG 2024

NC-1, 11 JUL 2024 to 08 AUG 2024



ELEV 961	D TDZE 961
----------	-------------------

CATEGORY	A	B	C	D
S-12	1660-1	699 (700-1)	1660-2	699 (700-2)
C CIRCLING	1660-1	699 (700-1)	1660-2 699 (700-2)	1700-2¼ 739 (800-2¼)
CISPI FIX MINIMUMS				
S-12	1520-1	559 (600-1)	1520-1½	559 (600-1½)
C CIRCLING	1520-1	559 (600-1)	1660-2 699 (700-2)	1700-2¼ 739 (800-2¼)



REIL Rwy 12 0					
HIRL Rwy 12-30 0					
FAF to MAP 4.7 NM					
Knots	60	90	120	150	180
Min:Sec	4:42	3:08	2:21	1:53	1:34