

WAAS CH 57917 W01A	APP CRS 008°	Rwy Idg TDZE 969 Apt Elev 969
--	------------------------	---

RNAV (GPS) RWY 1

LAFAYETTE MUNI (3M7)

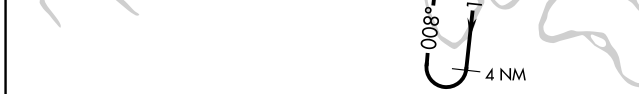
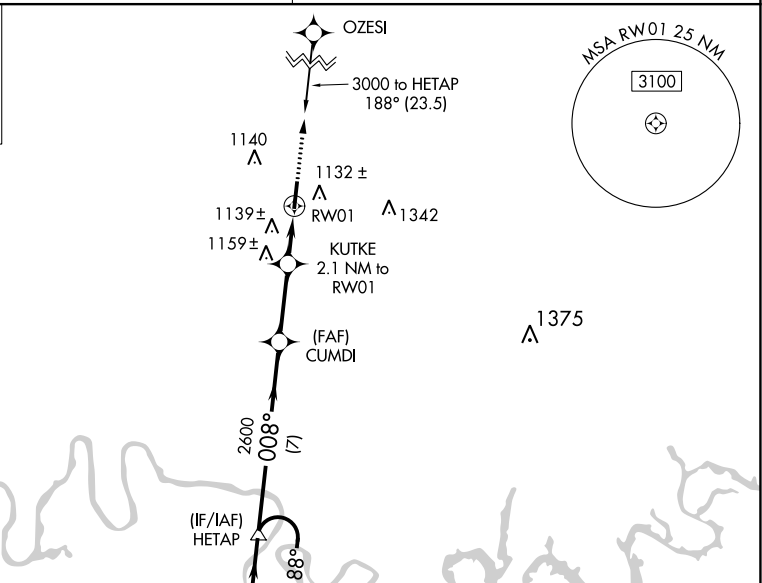
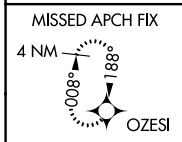
RNP APCH - GPS.

NA For uncompensated Baro-VNAV systems, LNAV/VNAV NA below -16°C or above 47°C. Obtain local altimeter setting on CTAF; when not received, use Bowling Green altimeter setting: increase LPV DA to 1441 feet and all visibilities ½ SM; increase LNAV/VNAV DA to 1585 feet and all visibilities ½ SM; increase all MDAs 140 feet and visibility LNAV Cat C and D ¼ SM and Circling Cat C and D ½ SM. VDP and Baro-VNAV NA when using Bowling Green altimeter setting. Rwy 1 helicopter visibility reduction below ¾ SM NA.

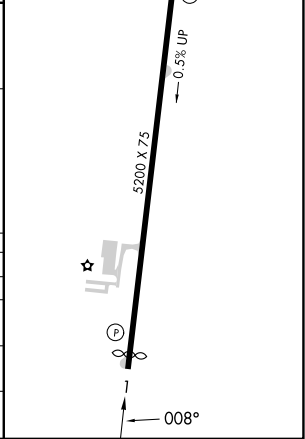
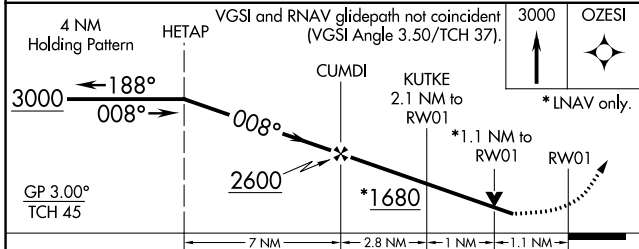
MISSED APPROACH: Climb to 3000 direct OZESI and hold.

NASHVILLE APP CON **118.4 360.7**

UNICOM **122.8 (CTAF)**



ELEV 969	D	TDZE 969
MIRL Rwy 1-19		
REIL Rws 1 and 19		



CATEGORY	A	B	C	D
LPV DA		1318-1¼	349 (400-1¼)	
LNAV/VNAV DA		1452-1¾	483 (500-1¾)	
LNAV MDA	1400-1	431 (500-1)	1400-1¼ 431 (500-1¼)	1400-1½ 431 (500-1½)
CIRCLING	1440-1	471 (500-1)	1600-1¾ 631 (700-1¾)	1700-2¼ 731 (800-2¼)

SE-1, 11 JUL 2024 to 08 AUG 2024

SE-1, 11 JUL 2024 to 08 AUG 2024