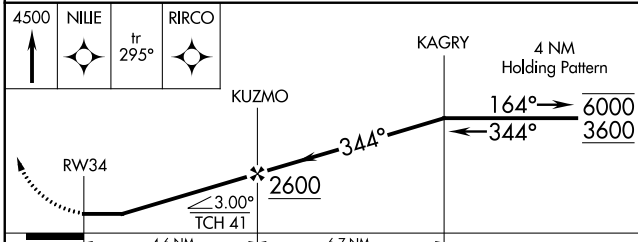
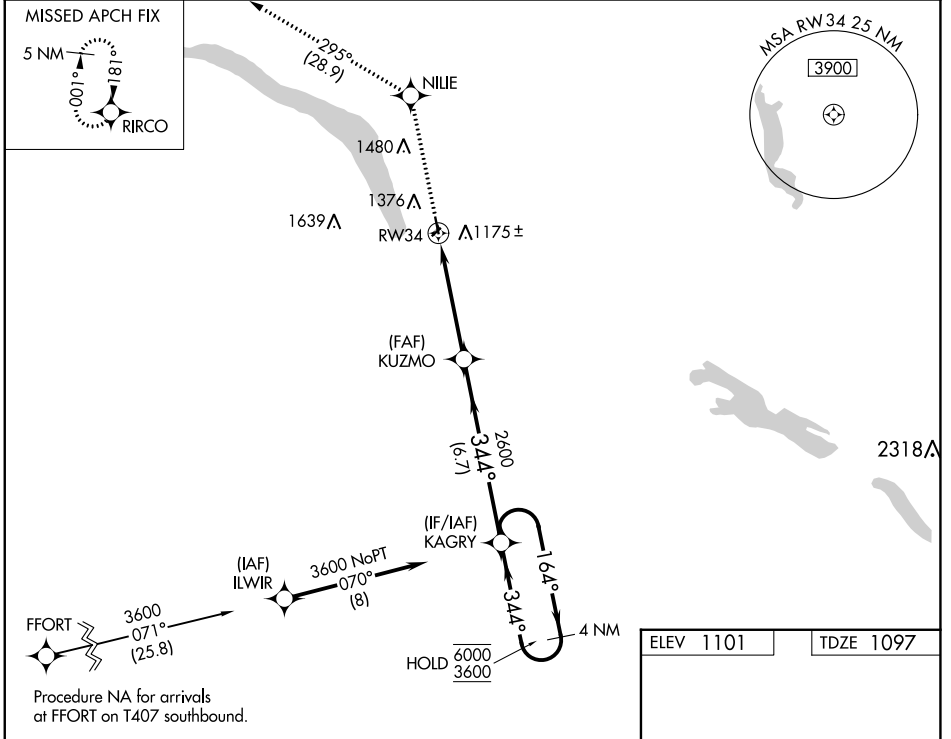


WAAS CH 87124 W34A	APP CRS 344°	Rwy Idg TDZE Apt Elev	3417 1097 1101
--	------------------------	-----------------------------	---

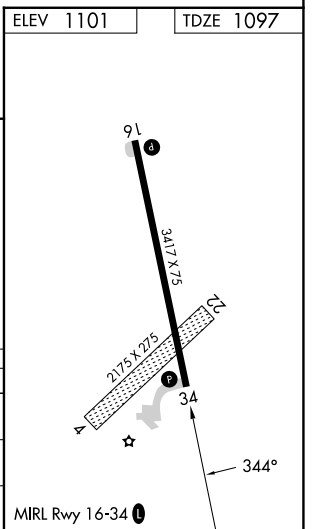
RNAV (GPS) RWY 34

ORTONVILLE MUNI/MARTINSON FLD (VVV)

RNP APCH - GPS.		MISSED APPROACH: Climb to 4500 direct NILEE and on track 295° to RIRCO and hold.	
<p>▼ Circling NA to Rwy 4 and 22. Procedure NA at night. ▲ Rwy 34 helicopter visibility reduction below 1 SM NA.</p>			
AWOS-3 119.225	MINNEAPOLIS CENTER 128.5 306.2	GCO 121.725	UNICOM 122.8 (CTAF) 1



CATEGORY	A	B	C	D
LP MDA	1500-1	403 (400-1)	1500-1½ 403 (400-1½)	NA
LNAV MDA	1500-1	403 (400-1)	1500-1½ 403 (400-1½)	NA
CIRCLING	1740-1	639 (700-1)	1780-2 679 (700-2)	NA



NC-1, 11 JUL 2024 to 08 AUG 2024

NC-1, 11 JUL 2024 to 08 AUG 2024