

APP CRS	Rwy Idg	<b>5010</b>
<b>271°</b>	TDZE	<b>777</b>
	Apt Elev	<b>778</b>

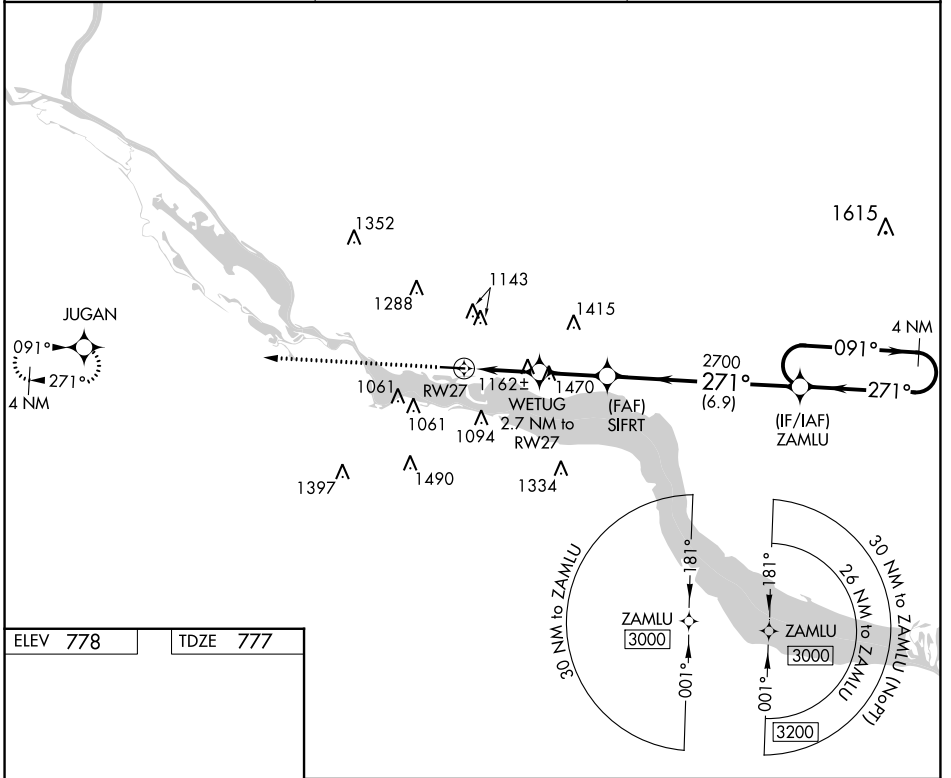
# RNAV (GPS) RWY 27

RED WING RGNL (RGK)

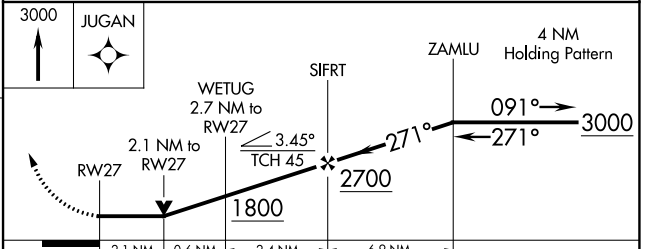
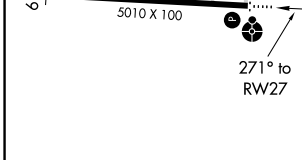
**⚠** DME/DME RNP-0.3 NA. VDP NA with South St. Paul altimeter setting. When local altimeter setting not received, use South St. Paul altimeter setting; increase all MDA 80 feet and visibility LNAV Cat C and Circling Cat C ½ SM and Circling Cat A/B ¼ SM. Helicopter visibility reduction below ¾ SM NA. Inop table does not apply to LNAV Cat C.

**ODALS** MISSED APPROACH: Climb to 3000 direct JUGAN and hold.

AWOS-3 <b>119.25</b>	MINNEAPOLIS APP CON <b>121.2 335.65</b>	UNICOM <b>123.05 (CTAF)</b>
-------------------------	--	--------------------------------



ELEV 778	TDZE 777
----------	----------



CATEGORY	A	B	C	D
LNAV MDA	1520-¾ 743 (800-¾)	1520-1¼ 743 (800-1¼)	1520-2 743 (800-2)	NA
CIRCLING	1520-1	742 (800-1)	1640-2½ 862 (900-2½)	NA

NC-1, 11 JUL 2024 to 08 AUG 2024

NC-1, 11 JUL 2024 to 08 AUG 2024