

(INDIE8.INDIE) 21280

AL-6674 (FAA)

RWJ AIRPARK (54T)
BAYTOWN, TEXAS

INDIE EIGHT DEPARTURE (RNAV)

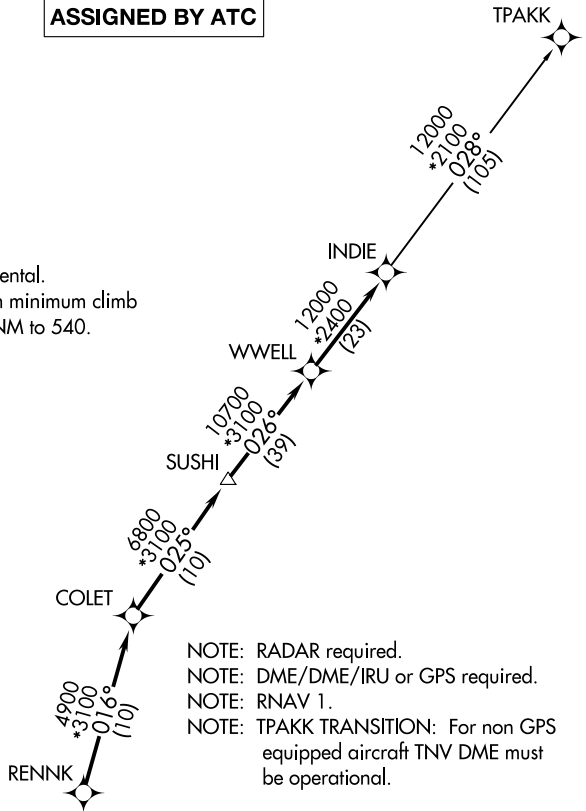
CTAF
122.7
HOUSTON DEP CON
134.45 284.0

**TOP ALTITUDE:
ASSIGNED BY ATC**

TAKEOFF MINIMUMS

Rwys 14, 32: NA Environmental.

Rwys 8, 26: Standard with minimum climb
of 500' per NM to 540.



NOTE: Chart not to scale.



DEPARTURE ROUTE DESCRIPTION

TAKEOFF RUNWAY 8: Climb on heading 084° to 540 for RADAR vectors to RENNK, thence

TAKEOFF RUNWAY 26: Climb on heading 264° to 540 for RADAR vectors to RENNK, thence

. . . . on track 016° to COLET, then on track 025° to SUSHI, then on track 026° to WWELL, then on track 026° to INDIE, then on (transition). Maintain ATC assigned altitude. Expect filed altitude 10 minutes after departure.

TPAKK TRANSITION (INDIE8.TPAKK)

INDIE EIGHT DEPARTURE (RNAV)
(INDIE8.INDIE) 07OCT21

BAYTOWN, TEXAS
RWJ AIRPARK (54T)

SC-5, 11 JUL 2024 to 08 AUG 2024

SC-5, 11 JUL 2024 to 08 AUG 2024