

| | | |
|-------------|----------|-------------|
| APP CRS | Rwy Idg | 5211 |
| 135° | TDZE | 76 |
| | Apt Elev | 76 |

RNAV (GPS) RWY 13

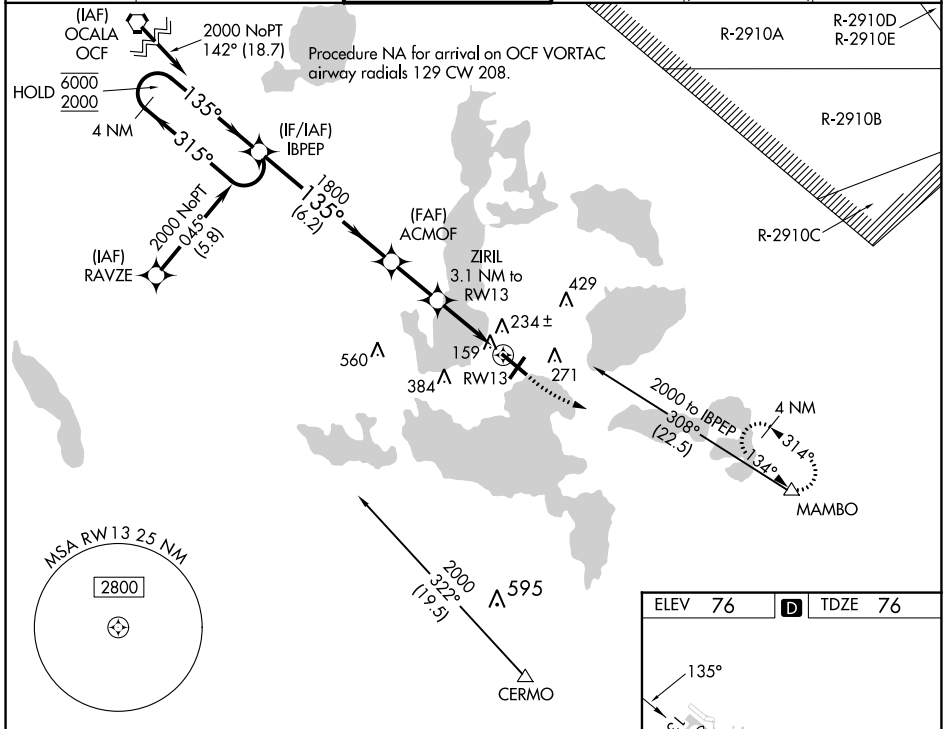
LEESBURG INTL (L.E.E)

RNP APCH - GPS.

⚠ Circling NA to Rwsy 3W and 21W. Rwy 13 helicopter visibility reduction below 3/4 SM NA.
⚠ VDP NA when using Orlando Intl altimeter setting. When local altimeter setting not received, use Orlando Intl altimeter setting and increase all MDAs 100 feet and LNAV visibility Cat C/D 1/4 SM, and Circling visibility Cat C/D 1/4 SM. Circling Rwy 4, 22 NA at night.

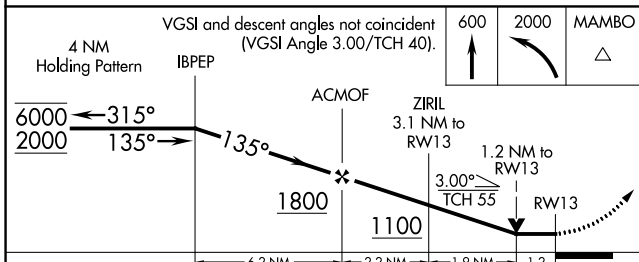
MISSED APPROACH: Climb to 600 then climbing left turn to 2000 direct MAMBO and hold.

| | | | | | |
|----------------|--------------------|------------------------|----------------|-------------------------------------|----------------|
| ATIS | ORLANDO APP CON | LEESBURG TOWER ★ | GND CON | CLNC DEL | UNICOM |
| 134.325 | 135.3 351.9 | 119.35 (CTAF) 0 | 121.725 | 120.225 (When twr closed) | 122.725 |

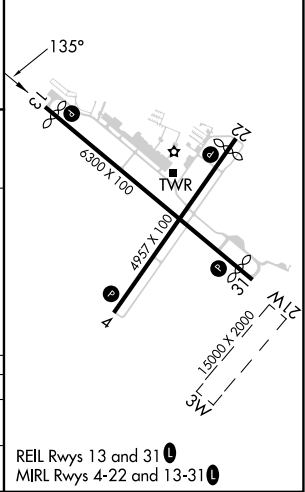


SE-3, 11 JUL 2024 to 08 AUG 2024

SE-3, 11 JUL 2024 to 08 AUG 2024



| | | | | |
|------|----|---|------|----|
| ELEV | 76 | D | TDZE | 76 |
|------|----|---|------|----|



| CATEGORY | A | B | C | D |
|----------|-------|-------------|----------------------|------------------------|
| INAV MDA | 500-1 | 424 (500-1) | 500-1¼ | 424 (500-1¼) |
| CIRCLING | 700-1 | 624 (700-1) | 780-2 704 (800-2) | 780-2¼ 704 (800-2¼) |