

WAAS CH 97602 W31A	APP CRS 315°	Rwy Idg 5600 TDZE 73 Apt Elev 76
--	------------------------	---

RNAV (GPS) RWY 31

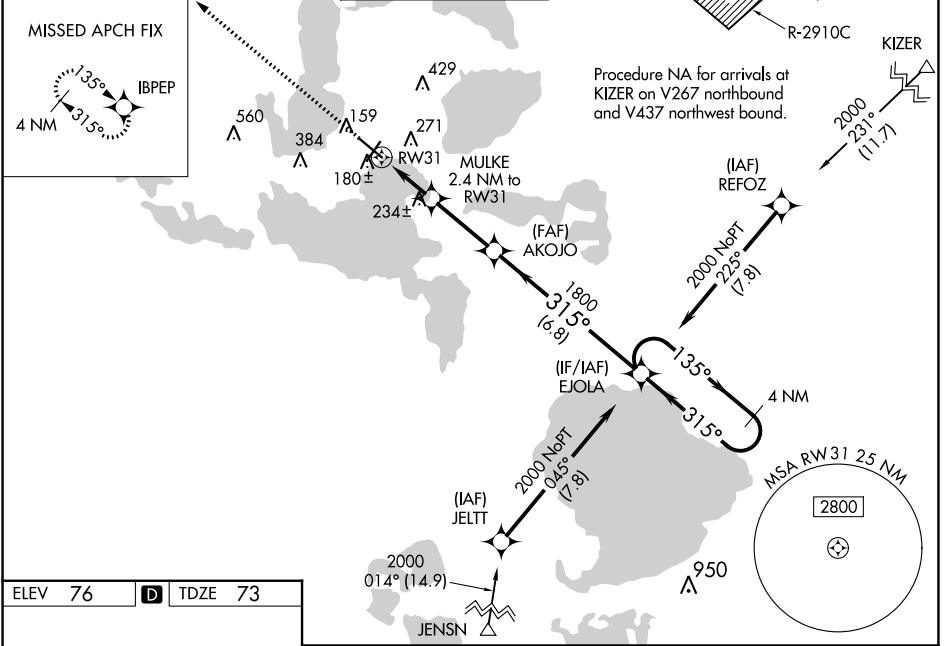
LEESBURG INTL (L.E.E)

RNP APCH-GPS.

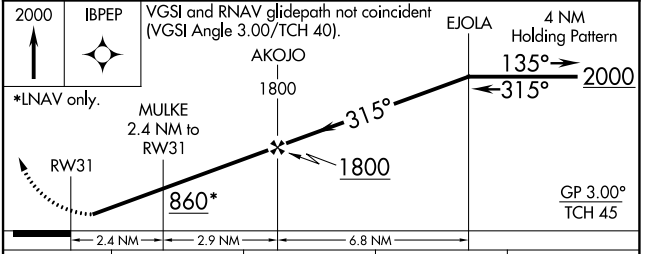
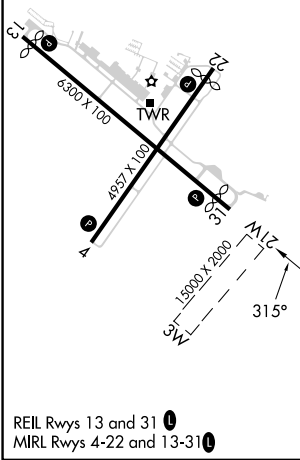
⚠ Baro-VNAV NA when using Orlando Intl altimeter setting. For uncompensated Baro-VNAV systems, LNAV/VNAV NA below -15°C or above 43°C. Rwy 31 helicopter visibility reduction below 1 SM NA. When local altimeter setting not received, use Orlando Intl altimeter setting: increase LPV DA to 408 feet, LNAV/VNAV DA to 442 feet, and all visibilities ¼ SM; increase all MDAs 100 feet and visibility Cats C and D ¼ SM. Straight-in Rwy 31 NA at night, Circling Rwy 4, 22, 31 NA at night.

MISSED APPROACH:
Climb to 2000 direct IBPEP and hold.

ATIS 134.325	ORLANDO APP CON 135.3 351.9	LEESBURG TOWER ★ 119.35 (CTAF) 0	GND CON 121.725	CLNC DEL 120.225 (When twr closed)	UNICOM 122.725
------------------------	---------------------------------------	--	---------------------------	---	--------------------------



ELEV 76	D	TDZE 73
---------	----------	---------



CATEGORY	A	B	C	D
LPV DA	323-1		250 (300-1)	
LNAV/VNAV DA	357-1		284 (300-1)	
LNAV MDA	500-1	427 (500-1)	500-1¼	427 (500-1¼)
CIRCLING	700-1	624 (700-1)	780-2 704 (800-2)	780-2¼ 704 (800-2¼)

SE-3, 11 JUL 2024 to 08 AUG 2024

SE-3, 11 JUL 2024 to 08 AUG 2024