

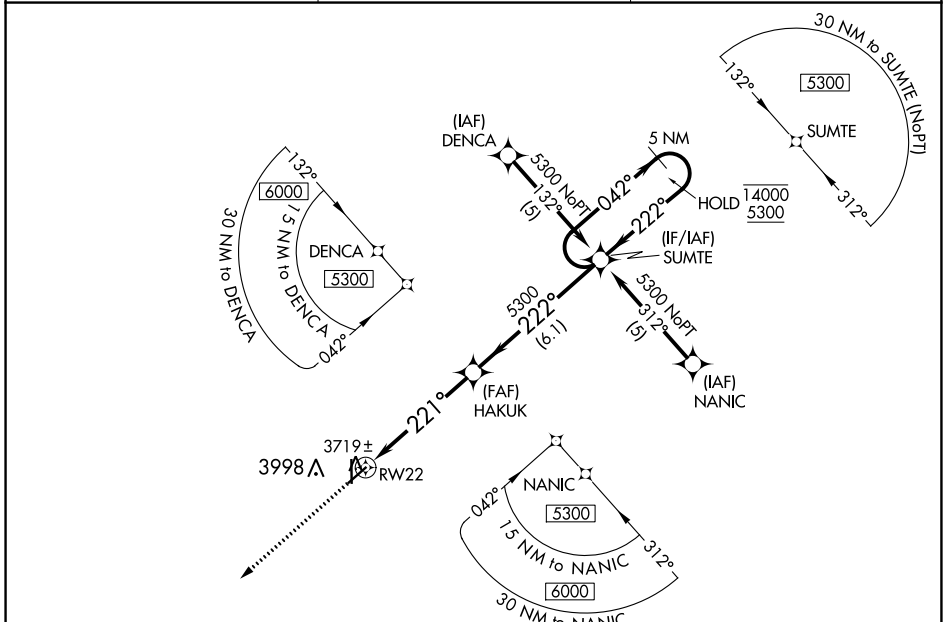
APP CRS 221°	Rwy Idg TDZE Apt Elev	4900 3615 3622
------------------------	-----------------------------	---

RNAV (GPS) RWY 22

ELKHART-MORTON COUNTY (EHA)

RNP APCH-GPS.	MISSED APPROACH: Climb to 6000 direct RIGGO and hold.
Rwy 22 helicopter visibility reduction below 3/4 SM NA.	

AWOS-3P 118.025	KANSAS CITY CENTER 134.0 257.625	UNICOM 122.8 (CTAF) 0
---------------------------	--	---------------------------------



NC-2, 11 JUL 2024 to 08 AUG 2024

NC-2, 11 JUL 2024 to 08 AUG 2024

	ELEV 3622	TDZE 3615		
6000	RIGGO			
	HAKUK	SUMTE		
		5 NM Holding Pattern		
	≤ 3.04° TCH 39	042° → 14000		
	221°	← 222° 5300		
	5.2 NM	6.1 NM		
CATEGORY	A	B	C	D
LNAV MDA	4100-1	485 (500-1)	4100-1 3/8 485 (500-1 3/8)	NA

