

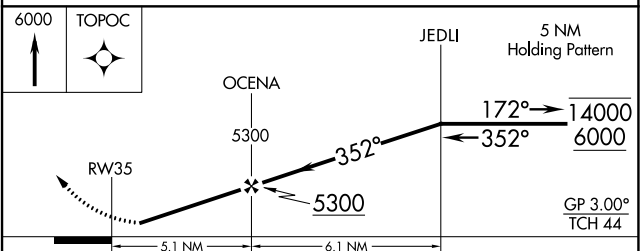
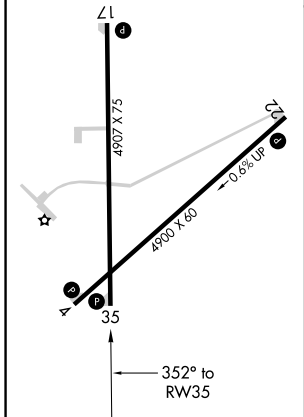
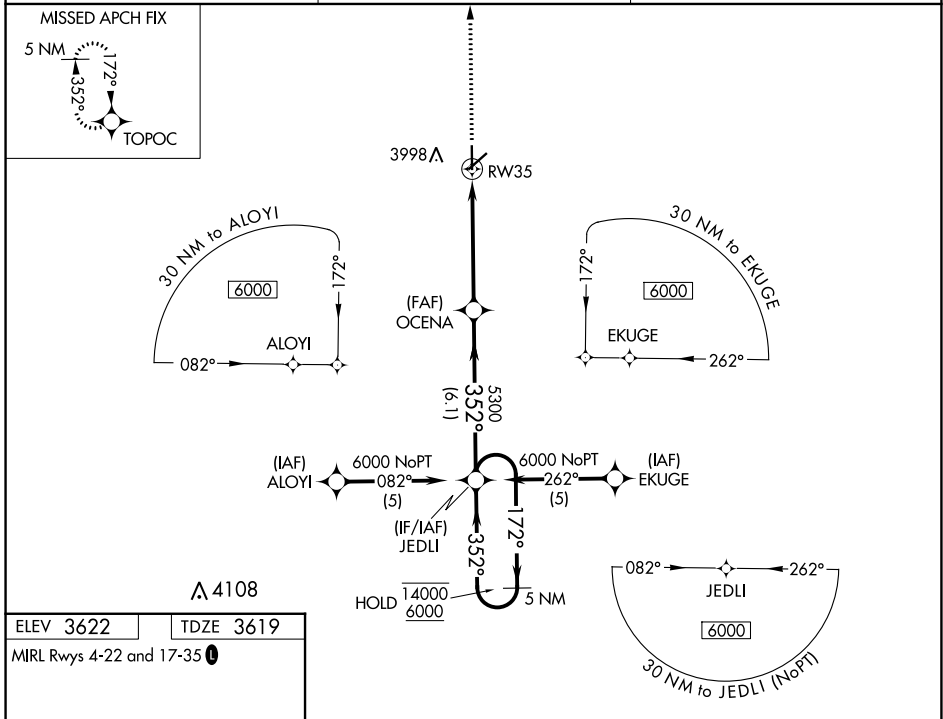
WAAS CH 50417 W35A	APP CRS 352°	Rwy Idg TDZE Apt Elev 4907 3619 3622
--	------------------------	--

RNAV (GPS) RWY 35

ELKHART-MORTON COUNTY (EHA)

RNP APCH-GPS.	MISSED APPROACH: Climb to 6000 direct TOPOC and hold.
<p>▽ Rwy 35 helicopter visibility reduction below 3/4 SM NA.</p> <p>▲ For uncompensated Baro-VNAV systems, LNAV/VNAV NA below -22°C or above 54°C.</p>	

AWOS-3P 118.025	KANSAS CITY CENTER 134.0 257.625	UNICOM 122.8 (CTAF) 0
---------------------------	--	---------------------------------



CATEGORY	A	B	C	D
LPV DA	3869-1 250 (300-1)			NA
LNAV/VNAV DA	4167-1 5/8 548 (600-1 5/8)			NA
LNAV MDA	4280-1 661 (700-1)		4280-1 7/8 661 (700-1 7/8)	

NC-2, 11 JUL 2024 to 08 AUG 2024

NC-2, 11 JUL 2024 to 08 AUG 2024