

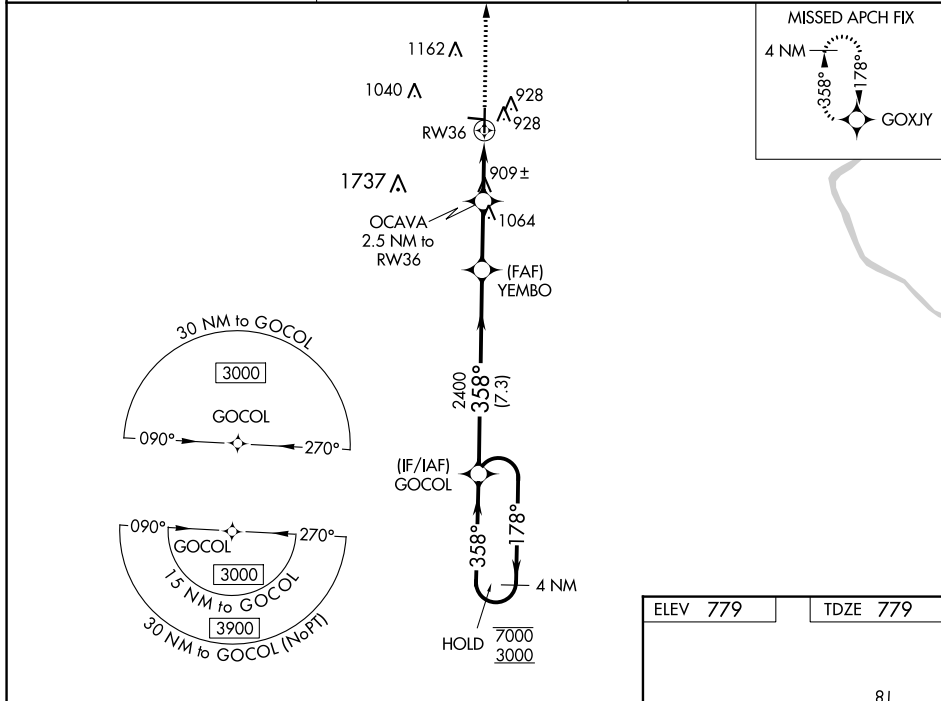
WAAS CH 93907 W36A	APP CRS 358°	Rwy Idg 5005 TDZE 779 Apt Elev 779
--	------------------------	---

RNAV (GPS) RWY 36

MARSHALL MEML MUNI (MHL)

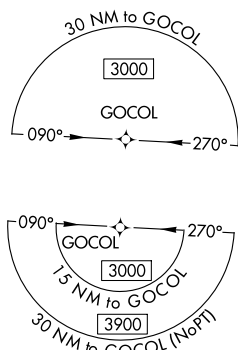
RNP APCH.	MISSED APPROACH: Climb to 3000 direct GOXJY and hold.
<p>▼ Circling NA to Rwys 9 and 27. For uncompensated Baro-VNAV systems, LNAV/VNAV NA below -16°C or above 54°C.</p>	

AWOS-3PT 118,675	WHITEMAN APP CON ★ 127.45	UNICOM 122.8 (CTAF) 0
----------------------------	-------------------------------------	---------------------------------

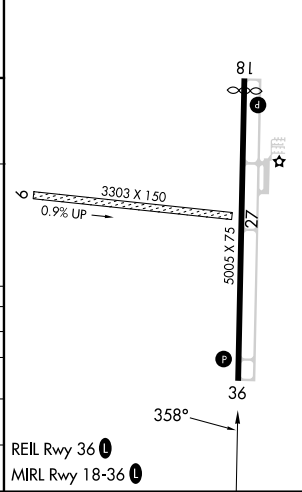
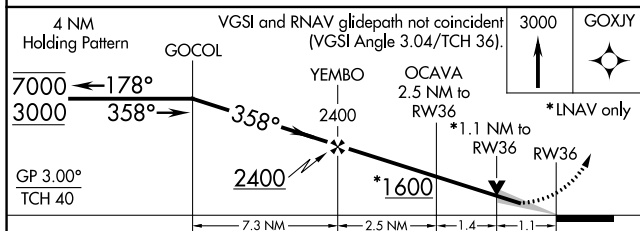


NC-3, 11 JUL 2024 to 08 AUG 2024

NC-3, 11 JUL 2024 to 08 AUG 2024



ELEV 779	TDZE 779
----------	----------



CATEGORY	A	B	C	D
LPV DA	1029-1 250 (300-1)			NA
LNAV/VNAV DA	1091-1 312 (400-1)			NA
LNAV MDA	1160-1 381 (400-1)		1160-1 381 (400-1 1/8)	NA
CIRCLING	1260-1 481 (500-1)		1480-2 701 (800-2)	NA

REIL Rwy 36
MIRL Rwy 18-36