

APP CRS	Rwy Idg	N/A
194°	TDZE	N/A
	Apt Elev	5915

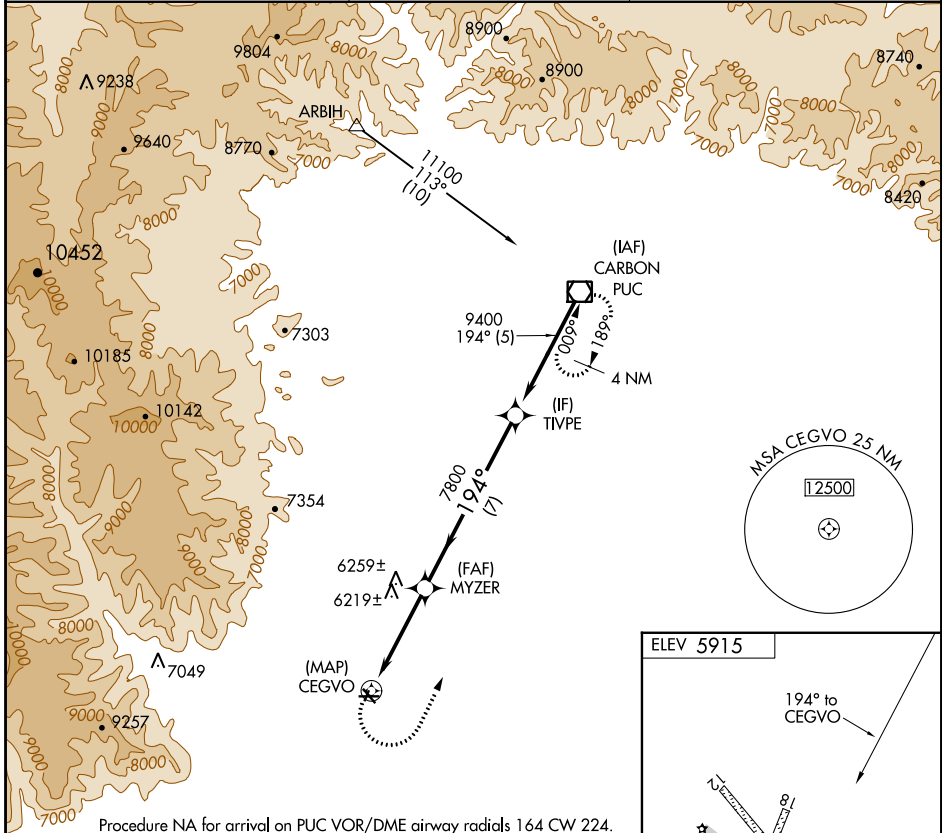
# RNAV (GPS)-C

HUNTINGTON MUNI. (69V)

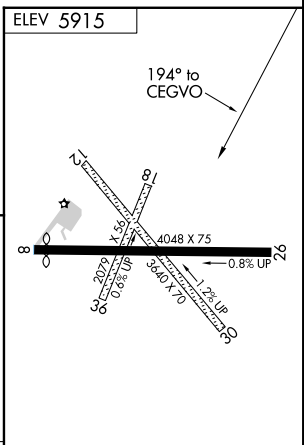
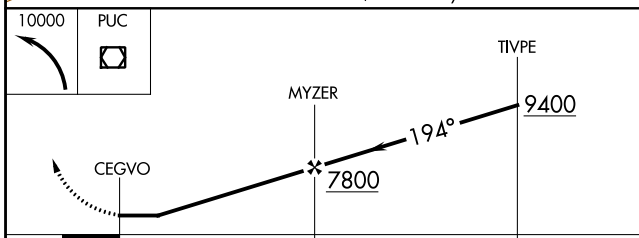
▼ Rwy 8, 12, 26, 30 helicopter visibility reduction below 1 SM NA.  
 ▲ NA DME/DME RNP-0.3 NA. Procedure NA at night. Use Price altimeter setting; when not received, procedure NA. Circling NA to Rwys 12-30 and 18-36.

MISSED APPROACH: Climbing left turn to 10000 direct PUC VOR/DME and hold.

PUC ASOS <b>135.425</b>	SALT LAKE CENTER <b>133.9 370.85</b>	UNICOM <b>122.8 (CTAF) 0</b>
----------------------------	---	---------------------------------



Procedure NA for arrival on PUC VOR/DME airway radials 164 CW 224.



CATEGORY	A	B	C	D
CIRCLING	6520-1 605 (700-1)	6600-1 685 (700-1)	6800-2¾ 885 (900-2¾)	NA

MIRL Rwy 8-26 0

SW-4, 11 JUL 2024 to 08 AUG 2024

SW-4, 11 JUL 2024 to 08 AUG 2024