

WAAS CH 78335 W14A	APP CRS 143°	Rwy Idg 4400 TDZE 1798 Apt Elev 1800
--	------------------------	---

RNAV (GPS) RWY 14

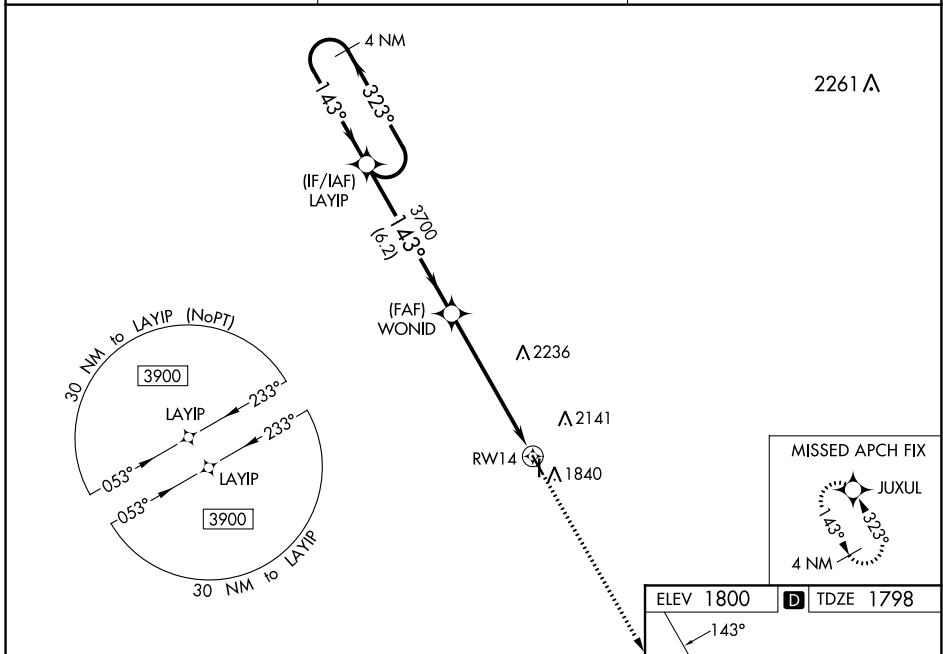
SMITH CENTER MUNI (K82)

RNP APCH-GPS.

For uncompensated Baro-VNAV systems, LNAV/VNAV NA below -18°C or above 54°C. When local altimeter setting not received, use Concordia altimeter setting and increase all DA 169 feet and all MDA 180 feet; increase LPV all Cats visibility ¼ SM, LNAV/VNAV all Cats visibility ½ SM, Circling Cat A visibility ¼ SM and Circling Cat B visibility ½ SM. Baro-VNAV and VDP NA with Concordia altimeter setting. Circling Rwy 36 NA at night.

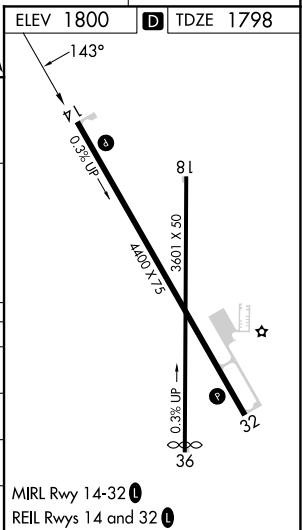
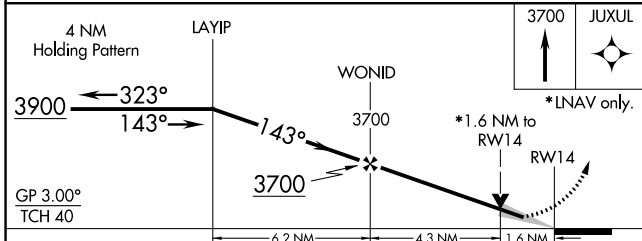
MISSED APPROACH:
Climb to 3700 direct
JUXUL and hold.

AWOS-3PT 118.45	MINNEAPOLIS CENTER 119.4 278.8	UNICOM 122.8 (CTAF) 0
---------------------------	--	---------------------------------



NC-2, 11 JUL 2024 to 08 AUG 2024

NC-2, 11 JUL 2024 to 08 AUG 2024



CATEGORY	A	B	C	D
LPV DA	1998-1	200 (200-1)		NA
LNAV/VNAV DA	2076-1	278 (300-1)		NA
LNAV MDA	2320-1	522 (600-1)		NA
CIRCLING	2480-1 680 (700-1)	2580-1 780 (800-1)		NA