

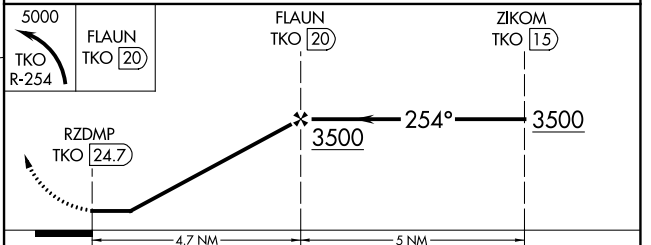
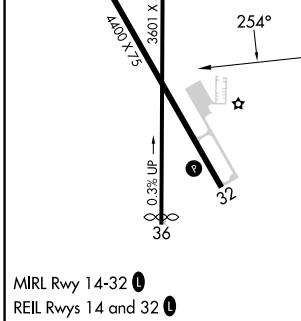
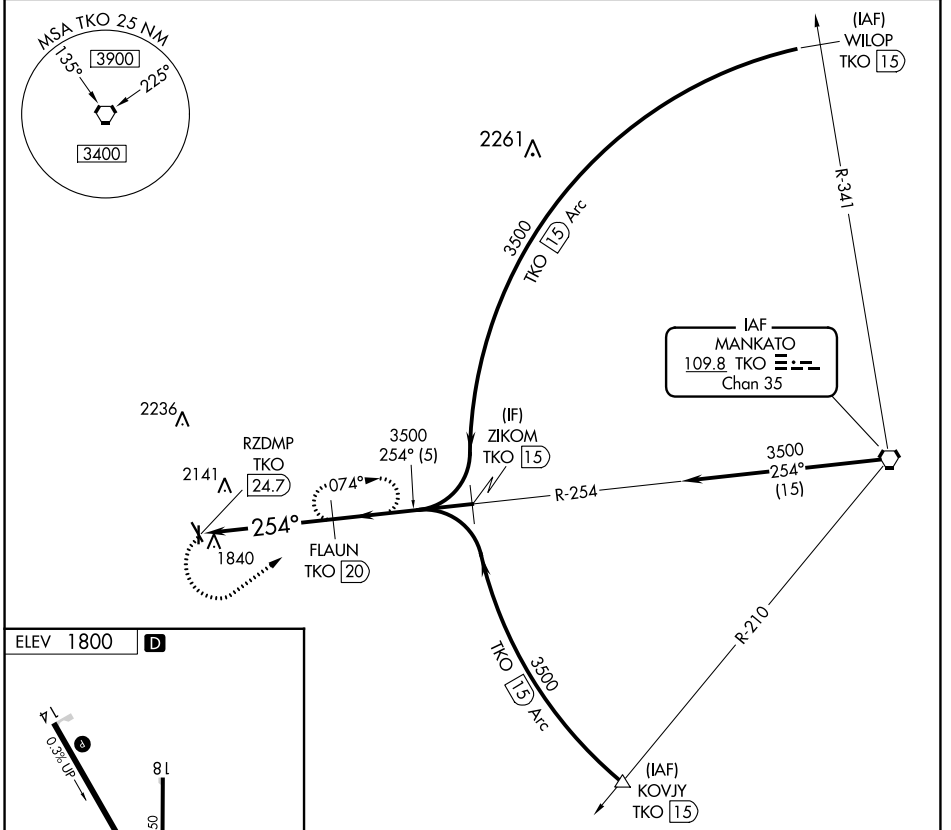
VORTAC TKO 109.8 Chan 35	APP CRS 254°	Rwy Idg TDZE Apt Elev	N/A N/A 1800
--	------------------------	-----------------------------	---

VOR-A

SMITH CENTER MUNI (K82)

DME required. When local altimeter setting not received use Blosser Muni altimeter setting and increase all MDA 180 and Circling Cat B visibility to 1½ SM. Circling to Rwy 36 NA at night.	MISSED APPROACH: Climbing left turn to 5000 on TKO VORTAC R-254 to FLAUN/TKO 20 DME and hold, continue climb-in-hold to 5000.
--	---

AWOS-3PT 118.45	MINNEAPOLIS CENTER 119.4 278.8	UNICOM 122.8 (CTAF)
---------------------------	--	-------------------------------



CATEGORY	A	B	C	D
C CIRCLING	2400-1 600 (600-1)	2580-1 780 (800-1)		NA

VOR-A

NC-2, 11 JUL 2024 to 08 AUG 2024

NC-2, 11 JUL 2024 to 08 AUG 2024