

APP CRS	Rwy ldg	3399
346°	TDZE	702
	Apt Elev	702

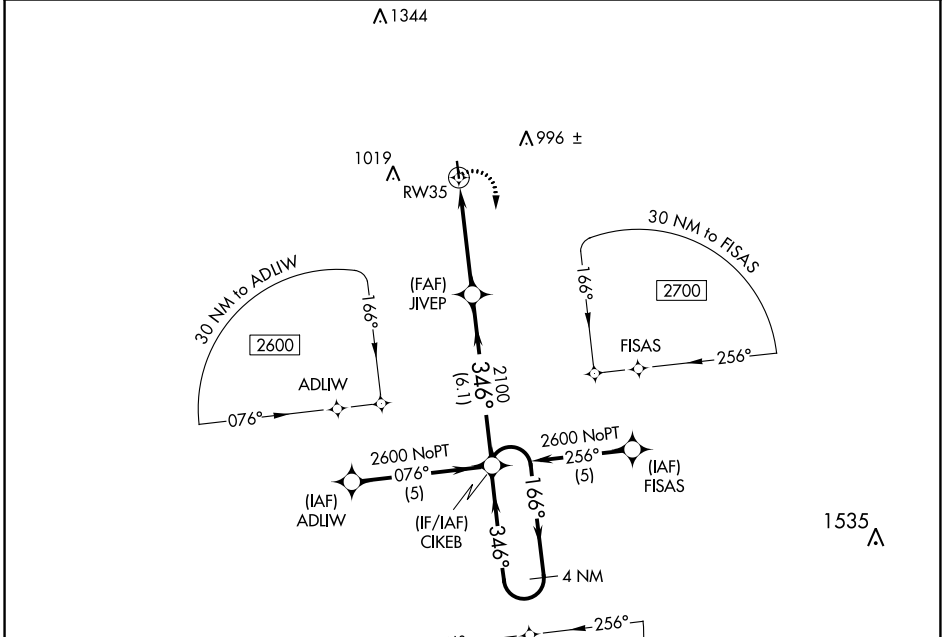
RNAV (GPS) RWY 35

DEVINE MUNI (23R)

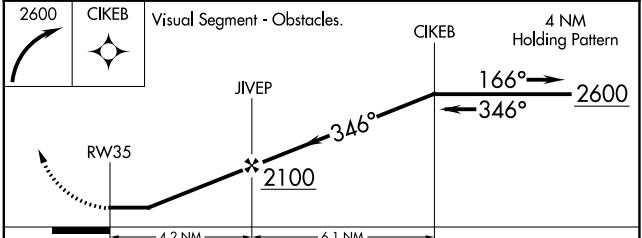
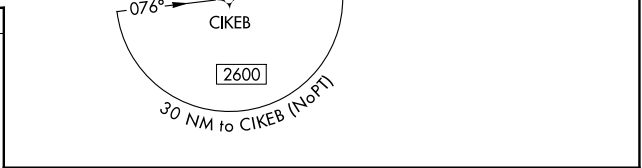
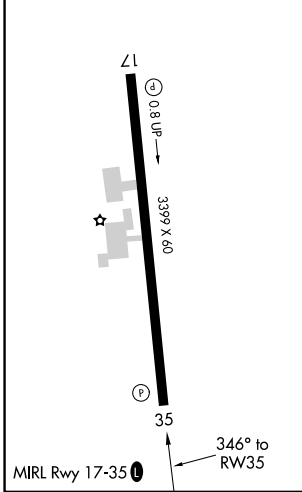
▽ DME/DME RNP-0.3 NA. Use Castroville Muni altimeter setting; when not received, use Hondo Muni altimeter setting and increase all MDA 40 feet.
▲ NA Night landing: Rwy 35 NA. Helicopter visibility below 1 SM NA.

MISSED APPROACH: Climbing right turn to 2600 direct CIKEB and hold.

CVB AWOS-3 119.25	HOUSTON CENTER 134.95 269.4	CTAF 122.9
-----------------------------	---------------------------------------	----------------------



ELEV 702	TDZE 702
----------	----------



CATEGORY	A	B	C	D
LNAV MDA	1140-1	438 (500-1)	NA	
CIRCLING	1380-1	678 (700-1)	NA	

SC-3, 11 JUL 2024 to 08 AUG 2024

SC-3, 11 JUL 2024 to 08 AUG 2024