

WAAS CH <b>63040</b> W27A	APP CRS <b>275°</b>	Rwy Idg TDZE Apt Elev	<b>5540</b> <b>7415</b> <b>7415</b>
---------------------------------	------------------------	-----------------------------	---

# RNAV (GPS) RWY 27

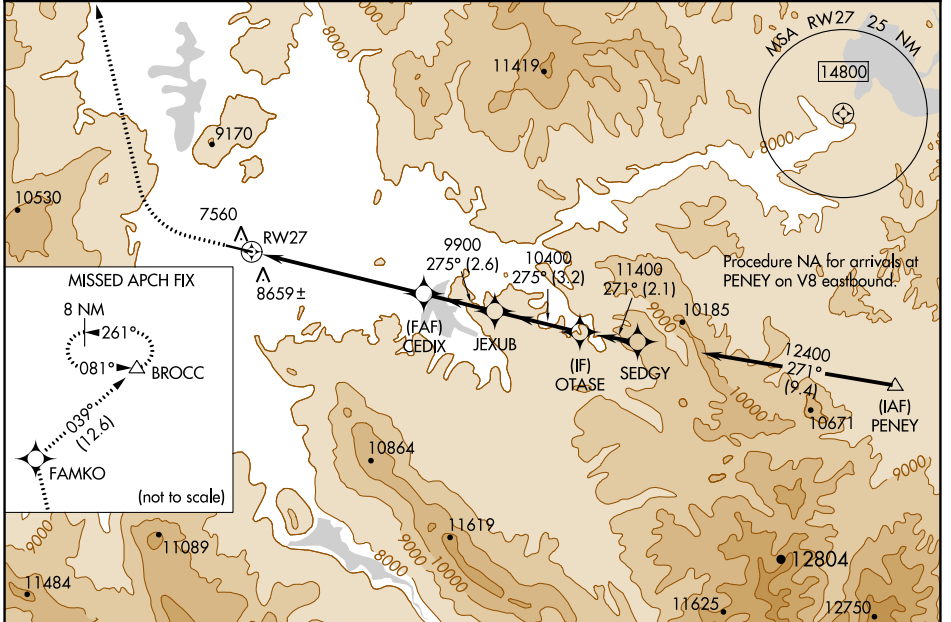
MC ELROY AIRFIELD (20V)

RNP APCH

**▼** Circling to Rwy 9 NA at night. Circling NA south of Rwy 9-27.  
**▲** Rwy 27 helicopter visibility reduction below 3/4 SM NA.  
**⊖** -19°C  
 For uncompensated Baro-VNAV systems, LNAV/VNAV NA below -29°C or above 48°C.

**MISSED APPROACH:** Climb to 9300 then climbing right turn to 13400 direct FAMKO and on track 039° to BROCC and hold. # Missed approach requires minimum climb of 405 feet per NM to 10000.

AWOS-3 <b>118.425</b>	DENVER CENTER <b>128.65 282.2</b>	UNICOM <b>122.8 (CTAF)</b>
--------------------------	--------------------------------------	-------------------------------

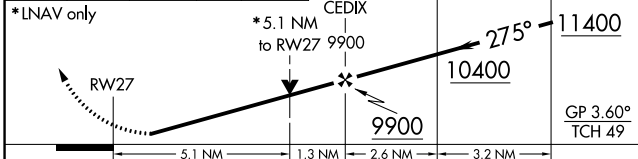


SW-1, 11 JUL 2024 to 08 AUG 2024

SW-1, 11 JUL 2024 to 08 AUG 2024

ELEV <b>7415</b>	TDZE <b>7415</b>
------------------	------------------

9300 13400 FAMKO tr 039° BROCC  
 VGSi and RNAV glidepath not coincident (VGSi Angle 3.00/TCH 44).  
 JEXUB OTASE



<p>REIL Rwy 9 and 27 <b>1</b>        MIRL Rwy 9-27 <b>1</b></p>

CATEGORY	A	B	C	D
LPV DA #	8245-2 1/2	830 (900-2 1/2)		NA
LPV DA	9021-6	1606 (1700-6)		NA
LNAV/VNAV DA	8819-5	1404 (1500-5)		NA
LNAV MDA	9100-1 1/4 1685 (1700-1 1/4)	9100-1 1/2 1685 (1700-1 1/2)	9100-3 1685 (1700-3)	NA
<b>C</b> CIRCLING	9100-1 1/4 1685 (1700-1 1/4)	9100-1 1/2 1685 (1700-1 1/2)	9220-3 1805 (1900-3)	NA