

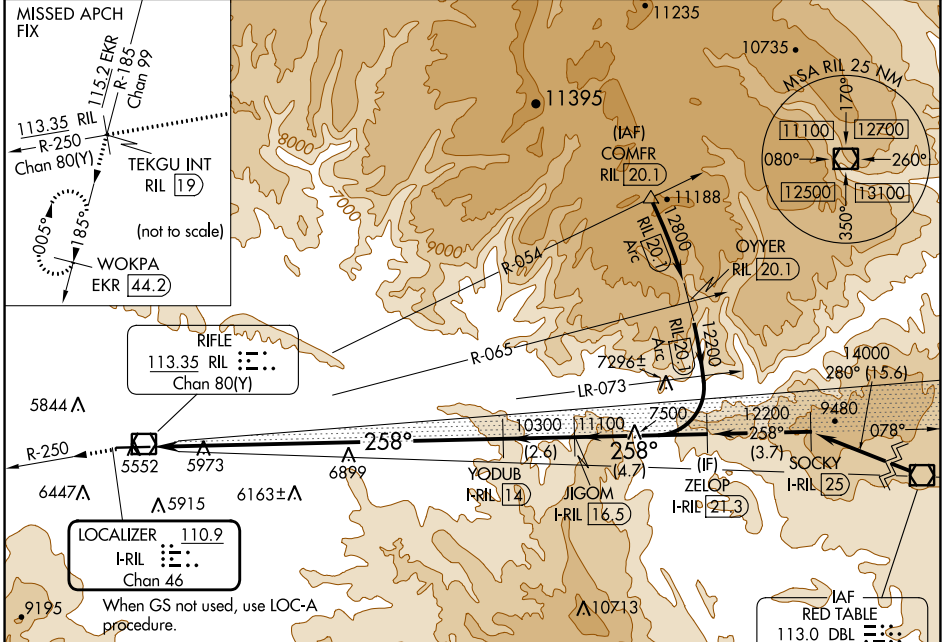
LOC/DME I-RIL <b>110.9</b> Chan 46	APP CRS <b>258°</b>	Rwy Idg TDZE Apt Elev <b>7000 5537 5537</b>
--	------------------------	--

# ILS RWY 26

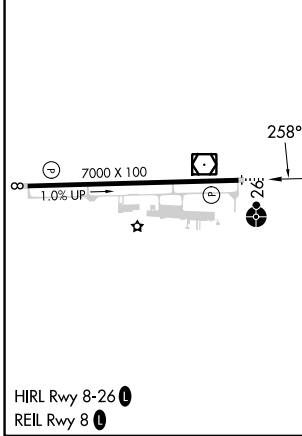
RIFLE GARFIELD COUNTY (R.I.L)

DME required.	ODALS .....	MISSED APPROACH: Climb to 14000 on RIL VOR/DME R-250 to TEKGU INT/RIL 19 DME and on EKR VOR/DME R-185 to WOKPA/EKR 44.2 DME and hold. Missed approach requires a minimum climb of 340 feet per NM to 10300; if unable to meet climb gradient, see LOC-A.
<p>▼</p> <p>▲ Rwy 26 helicopter visibility reduction below 3/4 SM NA.</p> <p>☁ -14°C</p>		

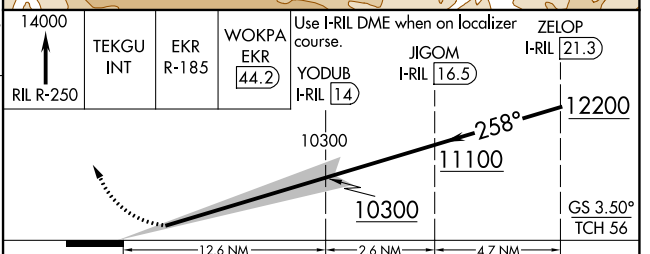
ASOS <b>135.275</b>	DENVER CENTER <b>134.95 327.075</b>	UNICOM <b>122.8 (CTAF) 0</b>
------------------------	--	---------------------------------



ELEV 5537	TDZE 5537
-----------	-----------



Procedure NA for arrival on DBL VOR/DME airway radials 244 CW 297.



CATEGORY	A	B	C	D
S-ILS 26	6800-4		1263 (1300-4)	

SW-1, 11 JUL 2024 to 08 AUG 2024

SW-1, 11 JUL 2024 to 08 AUG 2024