

APP CRS	Rwy Idg	<b>3222</b>
<b>088°</b>	TDZE	<b>465</b>
	Apt Elev	<b>465</b>

# RNAV (GPS) Z RWY 9

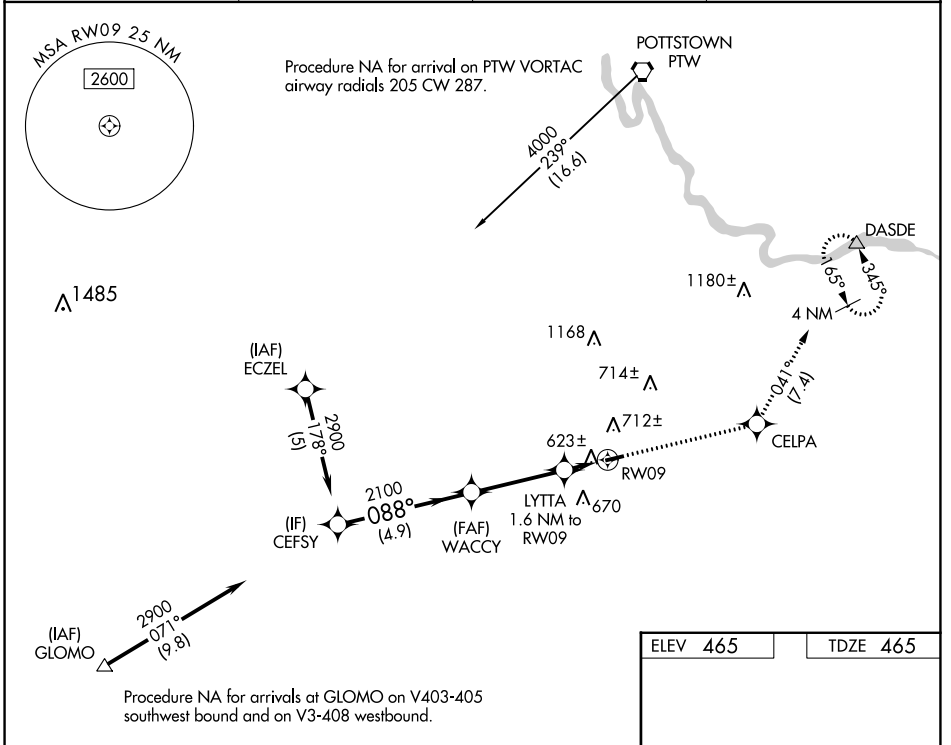
BRANDYWINE RGNL (OQN)

RNP APCH - GPS.

**⚠** Rwy 9 helicopter visibility reduction below 3/4 SM NA. When local altimeter setting not received, use Coatesville altimeter setting and increase all MDAs 60 feet.

**MISSED APPROACH:** Climb to 2900 direct CELPA and left turn on track 041° to DASDE and hold.

AWOS-3T <b>121.4</b>	PHILADELPHIA APP CON <b>124.35 319.15</b>	CLNC DEL <b>125.6</b>	UNICOM <b>123.075 (CTAF)</b>
-------------------------	--	--------------------------	---------------------------------



NE-4, 11 JUL 2024 to 08 AUG 2024

NE-4, 11 JUL 2024 to 08 AUG 2024

ELEV 465	TDZE 465
----------	----------

