

APP CRS	Rwy Idg	3252
146°	TDZE	391
	Apt Elev	391

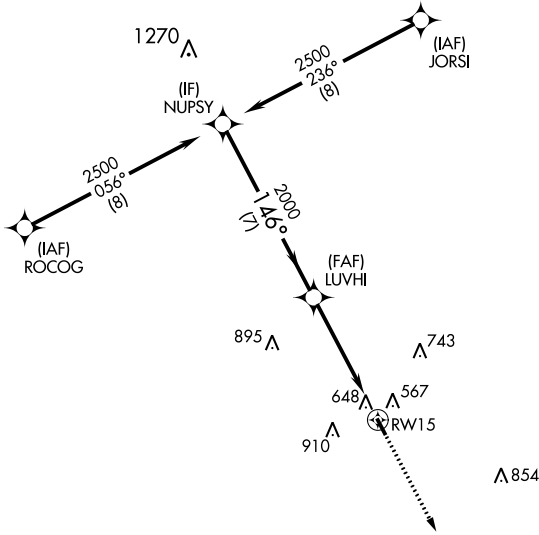
RNAV (GPS) RWY 15

CALDWELL MUNI (RWV)

⚠ When local altimeter setting not received, use College Station altimeter setting and increase all MDA 60 feet. Circling NA east of Rwy 15-33.
⚠ DME/DME RNP-0.3 NA. Procedure NA at night. Helicopter visibility reduction below 1 SM NA.

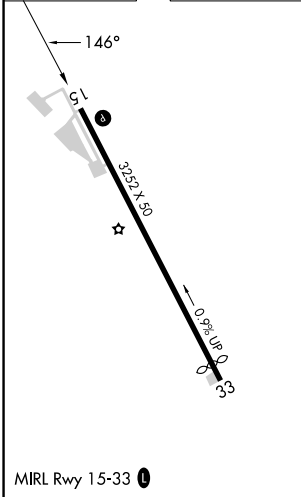
MISSED APPROACH: Climb to 2000 direct KOKEC and hold.

AWOS-3PT 118.35	HOUSTON APP CON 134.3 360.85	CTAF 122.9 ①
---------------------------	--	-------------------------------

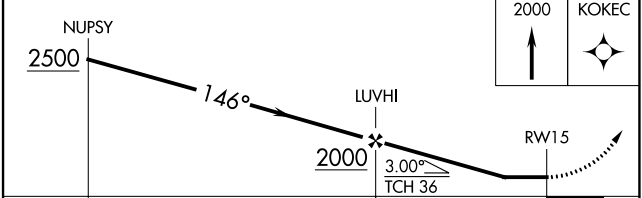
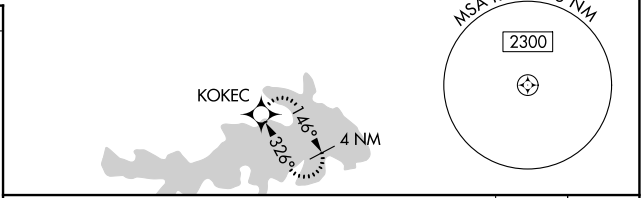


RADAR REQUIRED

ELEV 391	TDZE 391
----------	----------



MIRL Rwy 15-33 **①**



CATEGORY	A	B	C	D
LNAV MDA	960-1	569 (600-1)	NA	
CIRCLING	1000-1 609 (700-1)	1220-1¼ 829 (900-1¼)	NA	

SC-5, 11 JUL 2024 to 08 AUG 2024

SC-5, 11 JUL 2024 to 08 AUG 2024