

WAAS CH 65619 W06A	APP CRS 058°	Rwy Idg 12000 TDZE 27 Apt Elev 30
--	------------------------	--

RNAV (GPS) RWY 6

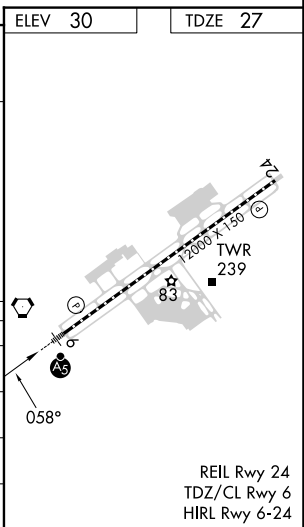
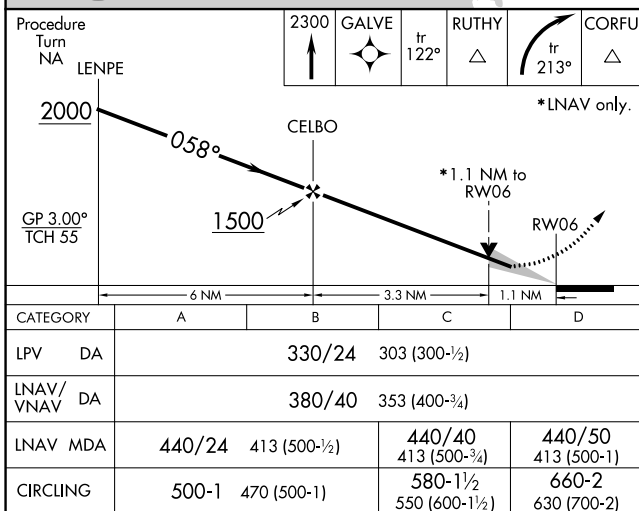
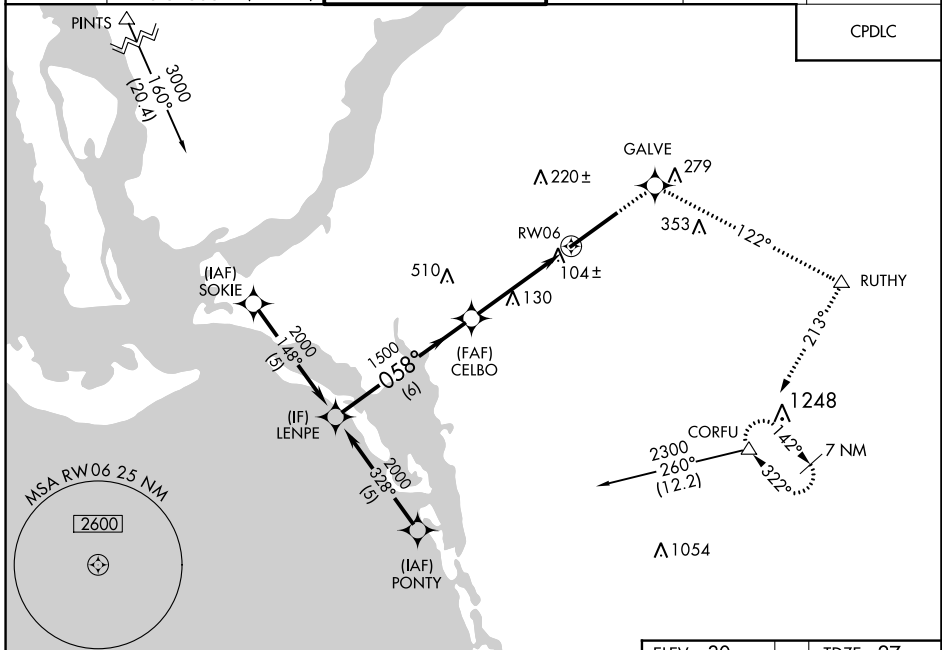
SOUTHWEST FLORIDA INTL (RSW)

▼ For uncompensated Baro-VNAV systems, LNAV/VNAV NA below -15°C (5°F) or above 48°C (118°F). DME/DME RNP-0.3 NA. For inoperative MALSR increase LPV all Cats visibility to RVR 5000, and LNAV Cat D visibility to RVR 6000.



MISSED APPROACH: Climb to 2300 direct GALVE and via 122° track to RUTHY and right turn via 213° track to CORFU and hold.

D-ATIS 124.65	FORT MYERS APP CON ★ 125.15 306.2 (RWY 6) 126.8 306.2 (RWY 24)	FORT MYERS TOWER ★ 128.75 (CTAF) 0 257.8	GND CON 121.9 257.8	CLNC DEL 132.075	UNICOM 122.95
-------------------------	--	---	-------------------------------	----------------------------	-------------------------



SE-3, 11 JUL 2024 to 08 AUG 2024

SE-3, 11 JUL 2024 to 08 AUG 2024