

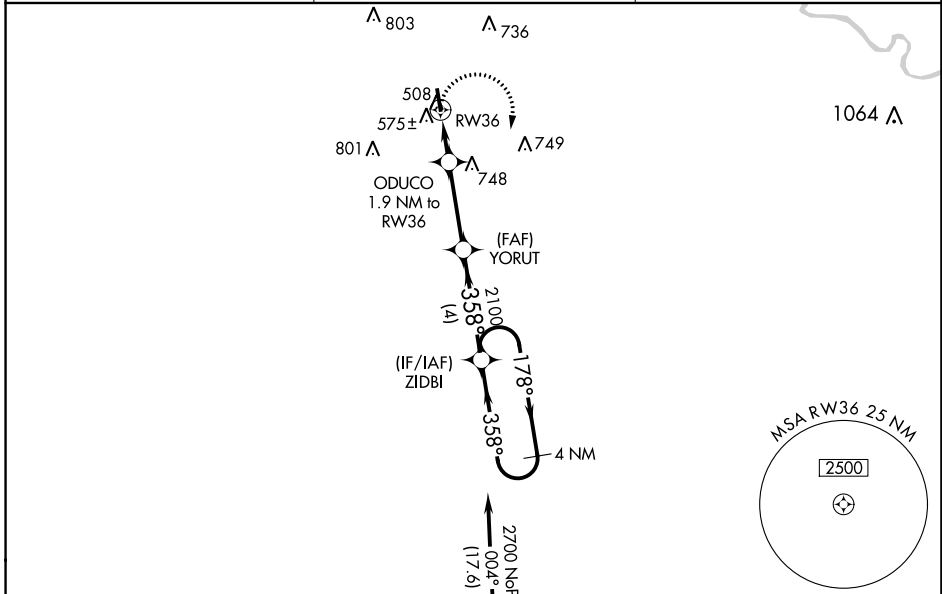
WAAS CH <b>40326</b> <b>W36A</b>	APP CRS <b>358°</b>	Rwy Idg <b>4335</b> TDZE <b>452</b> Apt Elev <b>452</b>
--	------------------------	---

# RNAV (GPS) RWY 36

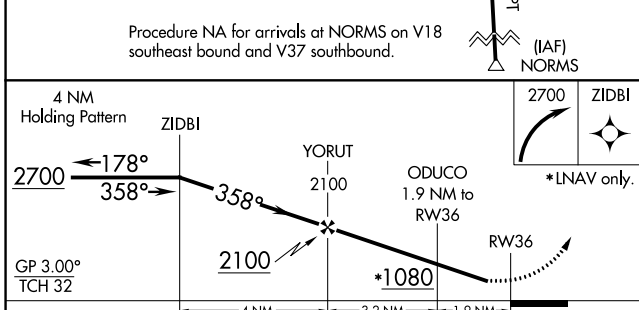
LEXINGTON COUNTY (6J0)

RNP APCH.	Baro-VNAV NA. Rwy 36 helicopter visibility reduction below 3/4 SM NA. Use Columbia Metro altimeter setting; when not received use Jim Hamilton L B Owens altimeter setting and increase all DA 19 feet, all MDA 20 feet and increase LPV and LNAV/VNAV all Cats visibility 1/2 mile.	MISSED APPROACH: Climbing right turn to 2700 direct ZIDBI and hold.
-----------	--	---

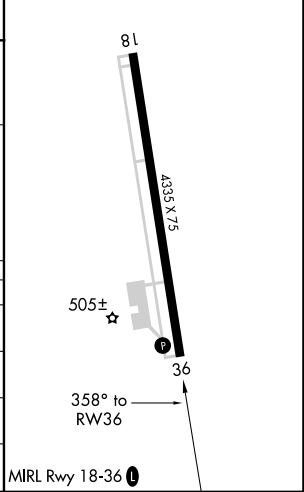
CAE ASOS <b>120.15</b>	COLUMBIA APP CON <b>124.15 338.2</b>	UNICOM <b>123.0 (CTAF) 0</b>
---------------------------	---	---------------------------------



Procedure NA for arrivals at NORMS on V18 southeast bound and V37 southbound.



ELEV <b>452</b>	TDZE <b>452</b>
-----------------	-----------------



CATEGORY	A	B	C	D
LPV DA	757-1	305 (400-1)		NA
LNAV/VNAV DA	793-1 1/8	341 (400-1 1/8)		NA
LNAV MDA	880-1	428 (500-1)		NA
CIRCLING	980-1 528 (600-1)	1060-1 608 (700-1)		NA

SE-2, 11 JUL 2024 to 08 AUG 2024

SE-2, 11 JUL 2024 to 08 AUG 2024