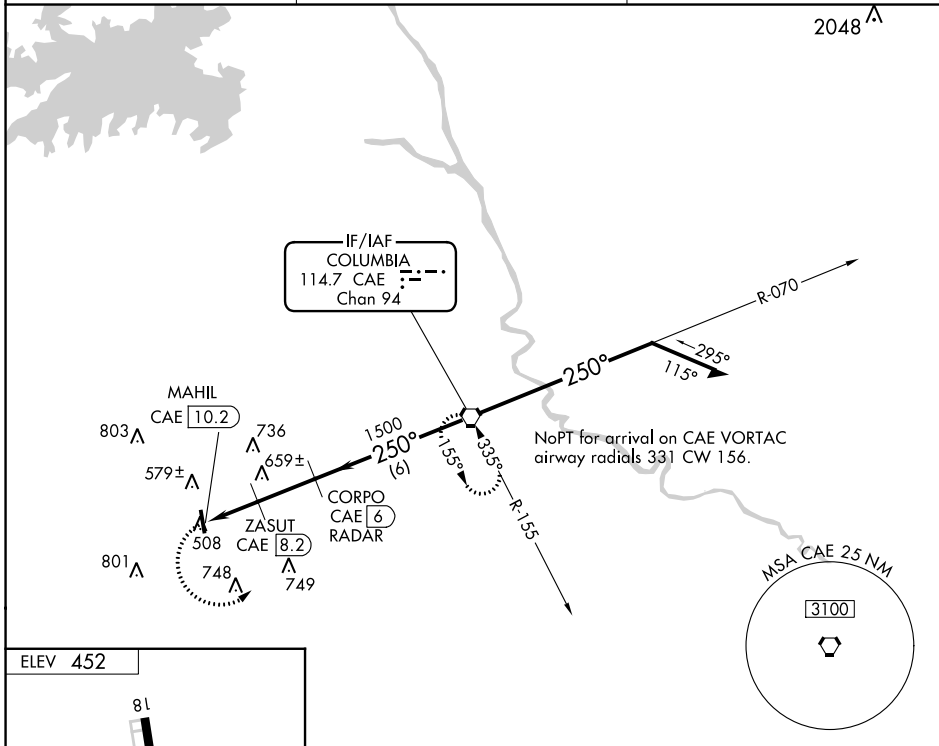


VORTAC CAE 114.7 Chan 94	APP CRS 250°	Rwy Idg TDZE Apt Elev	N/A N/A 452
--	------------------------	-----------------------------	--

VOR-A
LEXINGTON COUNTY (6J0)

DME or RADAR required.		MISSED APPROACH: Climbing left turn to 2100 direct CAE VORTAC and hold.
<p>Use Columbia Metro altimeter setting; when not received, use Jim Hamilton L B Owens altimeter setting and increase all MDA 20 feet.</p>		
CAE ASOS 120.15	COLUMBIA APP CON 124.15 338.2	UNICOM 123.0 (CTAF) 0



SE-2, 11 JUL 2024 to 08 AUG 2024

SE-2, 11 JUL 2024 to 08 AUG 2024

